

WATERS DELINEATION REPORT

SOLDIERS HOME ROAD
ROAD IMPROVEMENTS
CITY OF WEST LAFAYETTE
DES. NOS. 1401291 AND 2201253

WABASH TOWNSHIP, TIPPECANOE COUNTY, INDIANA

Prepared for:
VS Engineering

May 22, 2025

Prepared by:



Complex Environment. Creative Solutions.

6958 Hillsdale Court
Indianapolis, IN 46256
Telephone: 317.400.1633
www.metricenv.com

WATERS DELINEATION REPORT
Soldiers Home Road
Des. Nos. 1401291 and 2201253
Wabash Township, Tippecanoe County, Indiana
Prepared By: Lara Jones
May 22, 2025

TABLE OF CONTENTS

1.0 Introduction 1

2.0 Project Description 1

 2.1 Purpose 1

 2.1.1 *Waters of the U.S.* 1

 2.1.2 *Waters of the State* 1

 2.1.3 *Wetlands* 2

3.0 Background Information – Existing Maps 2

 3.1 USGS 7.5-minute Topographic Map 3

 3.2 USDA-NRCS Soil Survey Maps 3

 3.3 USFWS National Wetlands Inventory (NWI) Map 4

 3.4 Flood Insurance Rate Map (FIRM) and IDNR Floodway Map 4

 3.5 USGS National Hydrography Dataset (NHD) Information: 4

4.0 Wetland and Stream Delineation Methodology 4

5.0 Results 5

 5.1 Streams 5

 5.2 Wetlands 6

 5.3 Upland Sampling Points 6

6.0 Conclusion 7

7.0 References 8

Exhibits

Exhibit 1 – Location Map

Exhibit 2 – USGS Topographic Maps

Exhibit 3 – National Wetlands Inventory and Natural Resources Conservation Service Soil Map

Exhibit 4 – Flood Insurance Rate, IDNR Floodway, and National Hydrography Dataset Map

Exhibit 5 – Waters Delineation and Photo Location Map

Appendices

Appendix A – Wetland Determination Data Sheets

Appendix B – HHEI Data Form

Appendix C – Site Photographs

1.0 INTRODUCTION

Metric Environmental, LLC (Metric) was contracted to perform a determination of the presence of Waters of the United States (U.S.) and/or Waters of the State within the investigated area (IA) of the proposed roadway reconstruction project. The proposed project is located in Wabash Township, Tippecanoe County, Indiana as shown on **Exhibit 1**. The site investigation, conducted by Lara Jones and Seth Snyder on November 20, 2024, found no wetlands and one stream totaling 88 linear feet (LFT) located within the IA.

2.0 PROJECT DESCRIPTION

The proposed project is located along Soldiers Home Road in the City of West Lafayette, Wabash Township, Tippecanoe County, Indiana. The project limits for phase I of this project extend from the Sagamore Parkway north to Hamilton Street, with 750 additional feet of incidental construction at the northern terminus. A location map showing the project location is provided as **Exhibit 1** and a USGS Indiana Quadrangle Topographic Map is provided as **Exhibit 2**.

2.1 Purpose

The purpose of this project is to reconstruct Soldiers Home Road under lead Des. No. 1401291 to create a 10-foot-wide multi-use path on the west side of the road and a 5-foot-wide sidewalk on the east side of the road, construct ADA-compliant curb ramps at intersecting streets, build a stairway to connect the multi-use path to the Sagamore Parkway, widen the roadway to accommodate a single-lane travel lane in each direction with a center two-way left turn lane, re-grade existing ditches and install new curb and storm drainage structures, and install new lighting and signage. The Des. No. 2201253 project includes constructing a 120-foot diameter roundabout with two 18-foot-wide circulating lanes and a 14-foot-wide concrete truck apron, building a 10-foot-wide multi-use path along the north and east sides of the roundabout, and installing new lighting and signage.

The objective of this investigation is to identify and delineate the Waters of the U.S. and Waters of the State, including wetlands, streams, and ponds, located within the proposed investigated area. This report identifies the Waters of the U.S. as defined by the U.S. Army Corps of Engineers (USACE) regulations and guidance documents, as well as Waters of the State and wetlands as defined by the State of Indiana rules and regulations.

2.1.1 Waters of the U.S.

The definition of Waters of the U.S. includes Traditional Navigable Waters (TNWs) of the U.S. and adjacent wetlands, non-navigable tributaries to TNWs, and wetlands that directly abut such tributaries (Department of the Army, Corps of Engineers and Environmental Protection Agency, 2015). The USACE has jurisdiction over all navigable Waters of the U.S. under the Rivers and Harbors Act of 1899. The USACE also regulates the placement of dredged or fill materials into Waters of the U.S. under Section 404 of the federal Clean Water Act (CWA). Section 404 of the CWA defines the landward limit for non-tidal waters as the Ordinary High Water Mark (OHWM). When adjacent wetlands are present, the limit of jurisdiction extends to the limit of the wetland. Depositing dredge or fill materials into wetlands or other Waters of the U.S. requires written permission through the USACE Section 404 permit process.

2.1.2 Waters of the State

Waters of the State are defined as surface and underground waterbodies, which exist wholly in the State (IDEM, 2016). Private ponds, reservoirs, or facilities built for reduction of pollutants prior to discharge are

not included in this definition. In Indiana, two government agencies have jurisdiction over Waters of the State: Indiana Department of Environmental Management (IDEM) and the USACE. IDEM is responsible for maintaining, protecting, and improving the physical, chemical, and biological integrity of Indiana's waters. IDEM administers the Section 401 Water Quality Certification (WQC) Program, and draws its authority from the federal CWA and Indiana's Water Quality Standards. Any person who wishes to place fill materials, excavate or dredge, or mechanically clear within a wetland, lake, river, stream, or other Waters of the State, must first apply for a CWA Section 404 permit through USACE and a Section 401 WQC permit through IDEM. If a Waters of the State is determined to be non-jurisdictional by the USACE, these waters are regulated by IDEM under the State Isolated Wetlands Law and a State Isolated Wetlands Permit may be required.

2.1.3 Wetlands

Wetlands are a category of Waters of the U.S. for which a specific identification methodology has been developed. Wetlands are identified using three criteria: hydrophytic vegetation, hydric soils, and wetland hydrology. Isolated wetlands, or those waters no longer subject to regulation under the CWA, are regulated under Indiana Code (IC) 13-18-22 and 327 Indiana Administrative Code (IAC) 17. This statute creates a category of Waters of the State known as State Regulated Wetlands, which are defined as wetlands as delineated under the *Corps of Engineers Wetlands Delineation Manual ("Regional Supplement to the Corps of Engineers Wetland Delineation Manual: Midwest Region (Version 2.0), August 2010)* and are considered isolated and not subject to federal law. Isolated wetlands and waters not regulated under CWA Section 404 in the state of Indiana are still regulated under Indiana's State Isolated Wetland Law. Any person who wishes to place fill materials, excavate or dredge, or mechanically clear within a wetland, lake, river, stream, or other Waters of the State not federally regulated, must apply for and obtain a State Isolated Wetland Permit (IDEM, 2016). For the purposes of expediting the review of the wetlands identified for this project, all wetlands are assumed to be jurisdictional Waters of the U.S. and subject to regulation by the USACE.

3.0 BACKGROUND INFORMATION – EXISTING MAPS

The initial steps in the wetland determination process include a review of documents that provide information on areas where wetlands have been previously identified or that possess a high likelihood of containing wetlands. Several sources of information were consulted to help identify potential jurisdictional areas within the survey boundaries. These resources included:

- U.S. Geological Survey (USGS) 7.5 Minute Topographic Map (Lafayette West, IN Quadrangle, 1998)
- U.S. Department of Agriculture (USDA), National Resources Conservation Service (NRCS), Soil Survey Maps (Tippecanoe County, Indiana)
- U.S. Fish and Wildlife Services (USFWS) National Wetlands Inventory (NWI) Map
- U.S. Federal Emergency Management Agency (FEMA), Flood Insurance Rate Map (FIRM)
- USGS National Hydrography Dataset (NHD) Map

A review of the USGS topographic map allowed for interpretation of slopes and the identification of potential Waters of the U.S. within the survey boundary.

Published soil surveys for Tippecanoe County in Indiana were reviewed to identify listed hydric soils and/or potential inclusions of hydric soils. Identified areas containing hydric soils were evaluated against other data collected to identify potential wetland areas. The county soils survey maps were developed from actual field investigations. However, they address only one of the three required wetland criteria (hydric soils) and may reflect historical conditions rather than current site conditions. The resolution of soil maps limits their accuracy as well. The mapping units are often generalized based on topography and many mapping units contain inclusions of other soil types for up to 15% of the area of the unit.

The NWI maps were developed to identify probable wetland areas and are mapped on USGS 7.5-minute quadrangle maps. The NWI maps were prepared from high-altitude photography and in most cases were not field checked. There are several limitations to the quality of this data. Therefore, the NWI maps should not be used as a sole determination to identify potential wetlands.

FIRM maps were developed to identify areas subject to flood hazards. These maps identify areas located within a flood zone, which may contain wetlands.

Indiana Department of Natural Resources (IDNR) floodway maps were developed to identify areas designated as floodways by the IDNR. These areas were mapped as approximate floodways and/or approved floodways. These maps identify areas within flood zones, which may contain wetlands.

The USGS National Hydrography Dataset (NHD) maps were developed to identify the water drainage network across the United States. The NHD maps can be helpful when determining the jurisdictional status of streams and identifying drainage connections between water features.

3.1 USGS 7.5-minute Topographic Map

Geographically, the IA is located in Sections 5 and 8; Township 23 North; Range 4 West. **Exhibit 2** includes the USGS Lafayette West, Indiana Quadrangle Topographic Maps. The flow regime of field-identified streams was verified using the topographic maps, with perennial streams verified as solid blue lines on the map, intermittent streams verified as dashed blue lines on the map, and ephemeral streams verified where no blue lines were present on the map. During a review of the USGS topographic maps, one waterway, Cedar Hollow, was identified by a dashed blue line within the IA as listed in **Table 1**.

Table 1: USGS Topographic Map Identified Streams within Investigated Area

Stream Name	Flow Regime
Cedar Hollow	Intermittent

Source: USGS 1998

3.2 USDA-NRCS Soil Survey Maps

The NRCS Web Soil Survey (USDA-NRCS, 1998) soil map and soil data for Tippecanoe County was compared against the National and State of Indiana Hydric Soils lists in order to assess the location of hydric soils. The soil map is provided as **Exhibit 3**. **Table 2** identifies the soil unit symbol, map unit name, and hydric soil rating. Two nationally listed hydric soil units were identified within the IA: Strawn-Rodman complex, 18 to 50 percent slopes (SyF) and Urban land-Starks-Fincastle complex, 0 to 2 percent slopes (UsA).

Table 2: Soil Map Unit Legend – Soil Map Units within Investigated Area

Symbol	Map Unit Name	Hydric Rating (%)
SyF	Strawn-Rodman complex, 18 to 50 percent slopes	Nonhydric (0%)
UsA	Urban land-Starks-Fincastle complex, 0 to 2 percent slopes	Predominantly Nonhydric (6%)

Source: USDA-NRCS Web Soil Survey 1998, National Hydric Soils List

3.3 USFWS National Wetlands Inventory (NWI) Map

The NWI map of the area included in **Exhibit 3** was retrieved from the USFWS NWI website (USFWS, 2016). One R4SBC mapped NWI polygon is located within the PSL and was associated with Cedar Hollow. The NWI wetlands identified within the PSL are listed in **Table 3**.

Table 3: Mapped NWI Wetlands within the Project Study Limits

Symbol	Wetland Type	Location Within PSL	Corresponding Feature
R4SBC	Riverine, Intermittent, Streambed, Seasonally Flooded	East Central	Cedar Hollow

Source: USFWS National Wetlands Inventory 2016

3.4 Flood Insurance Rate Map (FIRM) and IDNR Floodway Map

No mapped floodplains are located within the IA. The nearest mapped floodplain was located approximately 2,000 feet (ft.) east of the IA and was associated with Wabash River. No Indiana DNR (IDNR) (Approximate or Detailed) Floodway was present within the IA. The FIRM map for this area is provided as **Exhibit 4A**.

3.5 USGS National Hydrography Dataset (NHD) Information:

Three mapped NHD flowlines are located within the IA, listed by occurrence from north to south within the IA in **Table 4** below. The NHD map is provided in **Exhibit 4A**.

Table 4: NHD Summary Table

Corresponding Feature	NHD Flowline Classification	Photo #	USGS Blue-line
Cedar Hollow	Stream/River (46003)	47-50	Yes
CV5	Canal/Ditch (33600)	12, 13, 14, 56, 57, 58, 59, 60	No
None	Stream/River (46000)	12	No

4.0 WETLAND AND STREAM DELINEATION METHODOLOGY

For the purpose of identifying wetlands regulated under Section 404 and 401 of the CWA, wetland determinations were made using the three criteria of assessment approach defined in the *1987 U.S. Army Corps of Engineers' Wetland Delineation Manual* and the *Midwest Regional Supplement "Regional Supplement to the Corps of Engineers Wetland Delineation Manual: Midwest Region (Version 2.0)."* According to the procedure described in the manual, areas that reflect a predominance of hydrophytic vegetation, hydric soils, and wetland hydrology are considered wetlands.

Streams were identified based on the presence of an OHWM as defined in 33 CFR 328.3(3) as the “line on the shore established by the fluctuations of water and indicated by physical characteristics such as a clear, natural line impressed on the bank, shelving, changes in the character of soil, destruction of terrestrial vegetation, the presence of litter and debris, or other appropriate means that consider the characteristics of the surrounding areas.” Once identified, streams were assessed using the Ohio EPA Primary Headwater Habitat Evaluation Index (HHEI) as described in the *Ohio EPA Field Evaluation Manual for Ohio’s Primary Headwater Habitat Streams (Version 2.3) (October, 2009)* or Qualitative Habitat Evaluation Index (QHEI) as described in the *Ohio EPA Methods for Assessing Habitat in Flowing Waters: Using the Qualitative Habitat Evaluation Index (June, 2006)* to determine overall stream aquatic habitat quality. Streams with a drainage area of less than one square mile or a maximum pool depth less than 40 cm were evaluated using the HHEI assessment and streams with a drainage area greater than one square mile or a pool depth greater than 40 cm were evaluated using the QHEI.

A reconnaissance (waters delineation) was conducted to determine the general topography, plant communities, soils, and hydrology present within the survey boundary. Areas identified as either Waters of the U.S. or Waters of the State were delineated and mapped using a handheld GPS unit, Trimble R1 GNSS receiver and a Trimble Catalyst DA2 receiver, with submeter accuracy.

5.0 RESULTS

The field reconnaissance was conducted on November 20, 2024, by Lara Jones and Seth Snyder of Metric. The site was investigated for evidence of hydrophytic vegetation, hydric soil, and wetland hydrology, with sampling points (SP) being dug in areas suspected of being wetlands as shown on **Exhibit 5**. Data was recorded on wetland determination data sheets from the USACE Midwest Regional Supplement and are included in **Appendix A**. Streams identified within the IA were evaluated using the HHEI stream assessment. HHEI data sheets are provided in **Appendix B**. A photograph location map is provided as **Exhibit 5** and site photographs are provided in **Appendix C**. The photographs are visual documentation of site conditions at the time of the inspection and are intended to provide representative visual examples of the features found on the site.

5.1 Streams

One stream, Cedar Hollow, was observed within the IA during the field reconnaissance. **Table 5** lists the streams identified during the site investigation.

Table 5: Streams located within the Investigated Area

Stream Name	Photo #	Lat/Long	OHWM Width (ft.)	OHWM Depth (ft.)	USGS Blue-line	Likely Water of the U.S.?	Dominant Substrate	HHEI Score	Potential Stream Impact (ft.)
Cedar Hollow	47-50	40.458412 -86.901537	7.25	1.67	Yes (Intermittent)	No	Sand, Artificial	46 (Modified Class II PHW)	88

Cedar Hollow – 88 LFT

Cedar Hollow flows from west to east and is approximately 88 LFT (0.015 ac.) long within the IA. Cedar Hollow is associated with a dashed blue line on the USGS topographic map, indicating that it is likely intermittent. This was supported during the field visit by moderate flow and a poor variety of substrates. Additionally, the entire reach of Cedar Hollow to its point of confluence with Wabash River was considered; the stream showed strong characteristics of intermittent flow outside of the IA. The topographical maps supported this flow regime as well, both by the dashed line as well as the contours surrounding the stream. Cedar Hollow is associated with a mapped Riverine, Intermittent, Streambed, Seasonally Flooded (R4SBC) NWI polygon. The OHWM was 7.25 ft. wide and 1.67 ft. deep within the IA. The dominant stream substrate was sand and riprap. No functional riffles or pools were observed. No sinuosity was observed. The riparian area of Cedar Hollow consisted of deciduous forest. The streambanks exhibited little erosion. No wildlife or aquatic organisms were observed within the stream. Vegetation along the stream banks included sugar maple (*Acer saccharum*, FACU), white oak (*Quercus alba*, FACU), and amur honeysuckle (*Lonicera maackii*, UPL). According to USGS *Indiana StreamStats*, the drainage area upstream of Cedar Hollow at the IA is 0.068 square miles. Qualities of the stream listed above contribute to Cedar Hollow being classified as average quality. This stream had an HHEI score of 55, which classifies it as a Modified Class II Primary Headwater Habitat (PHWH). The stream flows northeast into the Wabash River, a jurisdictional Water of the U.S. Because the stream is intermittent, it meets the current definition of a WOTUS, so it should be considered a Water of the U.S.

5.2 Wetlands

No wetlands were observed within the IA during the field reconnaissance.

5.3 Upland Sampling Points

One upland sampling point was taken in the investigated area in an area that was suspected of being a wetland. This sampling point did not qualify as a wetland as it did not meet all three wetland criteria. **Table 6** lists the sampling point that was taken but was not associated with a wetland. A description of this upland sampling point is provided below.

Table 6: Upland Sampling Point Data Summary Table

Plot #	Photo #	Lat/Long	Hydrophytic Vegetation	Hydric Soils	Wetland Hydrology	Within a Wetland
UP-1	51-53	39.772661 -85.983904	Yes	No	Yes	No

Upland Sampling Point 1 (UP1)

UP1 was located on a hillslope east of Soldiers Home Rd. The dominant vegetation at this sampling point was white oak (*Quercus alba*, FACU) and chinquapin oak (*Quercus muehlenbergii*, FACU), in the tree stratum, amur honeysuckle (*Lonicera maackii*, UPL) and sugar maple (*Acer saccharum*, FACU) in the sapling/shrub stratum, and sweet Joe-Pye-weed (*Eutrochium purpureum*, FAC) and blue wood aster (*Symphotrichum cordifolium*, UPL) in the herb stratum. None of the hydrophytic vegetation indicators were met. To a depth of 20 in., the soil in the test pit was a silt loam and exhibited a matrix color of 10YR 3/1 (100 percent). This did not meet any of the hydric soil indicators. No indicators of wetland hydrology were observed. Since none of the three required wetland criteria were met, this area did not qualify as a wetland.

6.0 CONCLUSION

One stream totaling 88 LFT and 0.015 acre was identified with the IA. **Table 7** lists the water feature identified and the corresponding acres and linear feet of stream located within the IA.

Table 7: Water Resources Identified within Investigated Area

Type of Waters	Name	Cowardin Class/ Flow Regime	Estimated Amount of Aquatic Resource in Investigated Area	Jurisdictional Waters of the U.S.
Stream	Cedar Hollow	Intermittent	88 LFT, 0.015 acre	No

We have performed a waters delineation for the proposed Soldiers Home Road improvements project. Cedar Hollow, identified within the IA, is likely jurisdictional and should be considered Waters of the U.S. Every effort should be taken to avoid and minimize impacts to this waterway. If any wetlands or streams will be impacted by this project, permits will be required by the USACE and IDEM. The final determination of jurisdictional waters is ultimately made by the USACE. This report is our best judgment based on the guidelines set forth by USACE.

7.0 REFERENCES

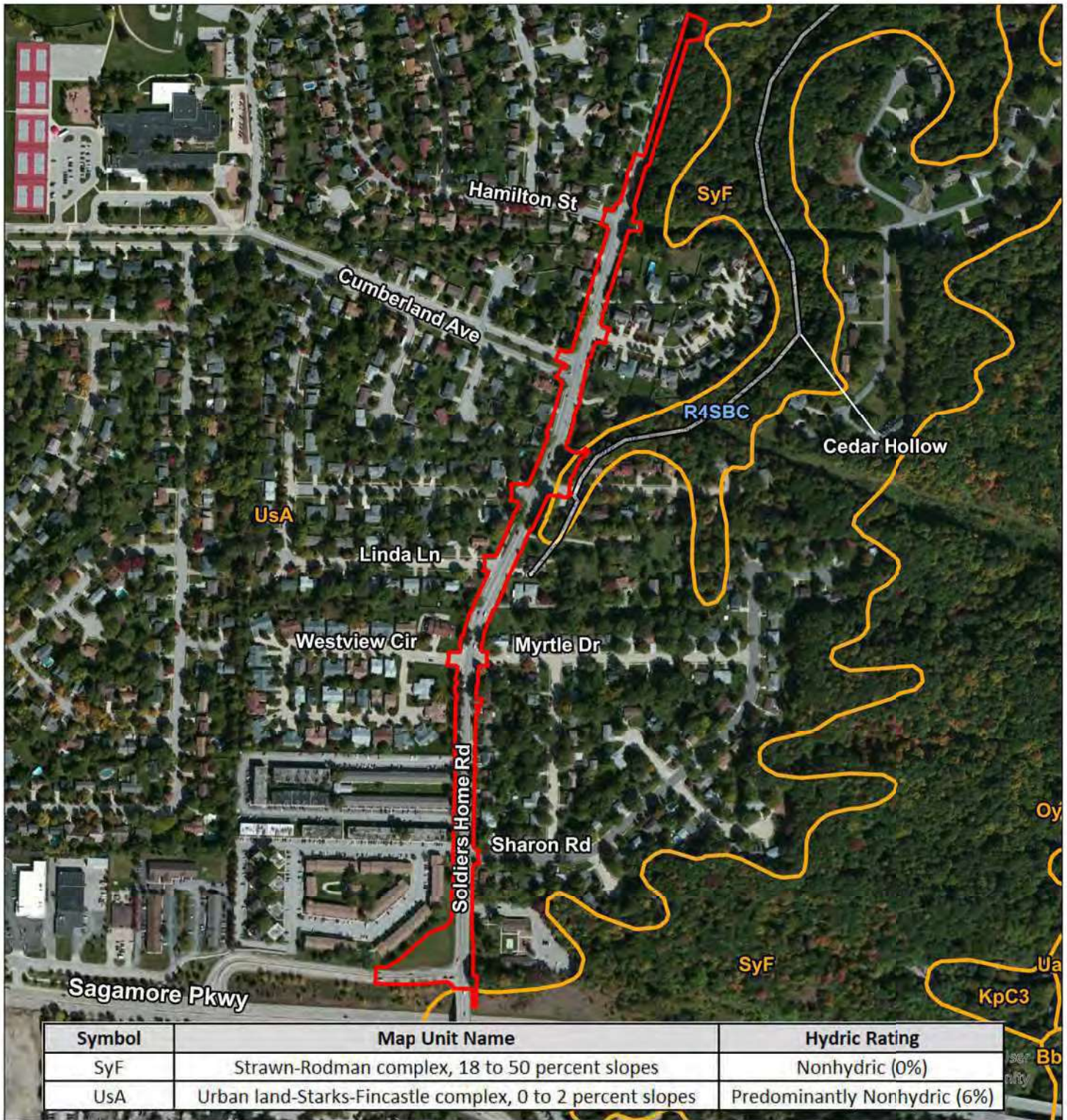
- Cowardin, L.M., V. Carter, F.C Golet, and E.T. LaRoe (1979) Classification of Wetlands and Deep Water Habitats of the United States. United States Department of the Interior, Fish & Wildlife Services, Washington D.C., Retrieved from <https://www.fws.gov/wetlands/Data/Wetland-Codes.html>
- Environmental Laboratories (1987) *Army Corps of Engineer Wetland Delineation Manual*, Technical Report Y-87-1, U.S. Waterways Experiment Station, Vicksburg, MS. Retrieved from <http://el.erdc.usace.army.mil/elpubs/pdf/wlman87.pdf>
- Environmental Laboratories (August, 2010) *Regional Supplement to the Corps of Engineers Wetland Delineation Manual: Midwest Region (Version 2.0)*. U.S Army Corps of Engineers, Washington, DC. Retrieved from http://www.usace.army.mil/Portals/2/docs/civilworks/regulatory/reg_supp/NCNE_suppv2.pdf
- Department of the Army, Corps of Engineers and Environmental Protection Agency (2015) *Clean Water Rule: Definition of "Waters of the United States"; Final Rule*. Federal Register Vol. 80 No. 124, 33 CFR Part 328, 40 CFR Parts 110, 112, 116, 117, 122, 230, 232, 300, 302, and 401.
- GIS layers were retrieved and projected in ArcView GIS from Indiana Map, Retrieved from www.indianamap.org
- Indiana Department of Environmental Management (January, 2016) *Waterways Permitting Handbook*. Indiana Department of Environmental Management, Office of Water Quality, 401 Water Quality Certification and Isolated Wetland Program, http://www.in.gov/idem/wetlands/files/waterways_permitting_handbook.pdf
- Munsell Soil Color Chart (1994 Revised Edition), New Windsor, NY.
- Ohio EPA, Division of Surface Water (October, 2009), *Field Evaluation Manual for Ohio's Primary Headwater Habitat Streams (Version 2.3)*.
- Ohio EPA Technical Bulletin EAS/2006-06-1 (June, 2006), *Methods for Assessing Habitat in Flowing Waters: Using the Qualitative Habitat Evaluation Index (QHEI) (Version 2.3)*. Ohio EPA, Division of Surface Water.
- U.S. Department of Agricultural (USDA), Natural Resources Conservation Service (1998) *Soil Survey of Tippecanoe County, Indiana*.
- U.S. Department of Agriculture (USDA), Natural Resources Conservation Service (NRCS), Web Soil Survey. Retrieved from <https://websoilsurvey.sc.egov.usda.gov/App/HomePage.htm>.
- U.S. Fish and Wildlife Service, National Wetlands Inventory. Retrieved from <http://www.fws.gov/wetlands>.
- U.S. Geological Survey *1:24,000, 7.5 Minute Topographic Quadrangle Map, Lafayette West (1998)*, IN www.indianamap.org.
- U.S. Geological survey (USGS), National Hydrography Dataset. Retrieved from <https://www.usgs.gov/national-hydrography/national-hydrography-dataset>

EXHIBITS

Duplicate exhibits were intentionally removed. Please refer to Appendix B in the CE document.

Soldiers Home Rd (Des. 1401291 and 2201253)
Road Improvements
Waters Delineation Report
Tippecanoe County, Indiana
Metric Project No. 21-0055




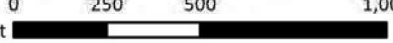


— Investigated Area (IA)
 NRCS Soil Survey
 NWI Wetland

Exhibit 3 - NWI and NRCS Soil Survey Map
 Soldiers Home Rd
 Road Improvements
 Perry County, Indiana
 Des. No. 1401291 and 2201253
 Metric Project No. 21-0055
 Map Date: 1/9/2025
 Map Author: Lara Jones

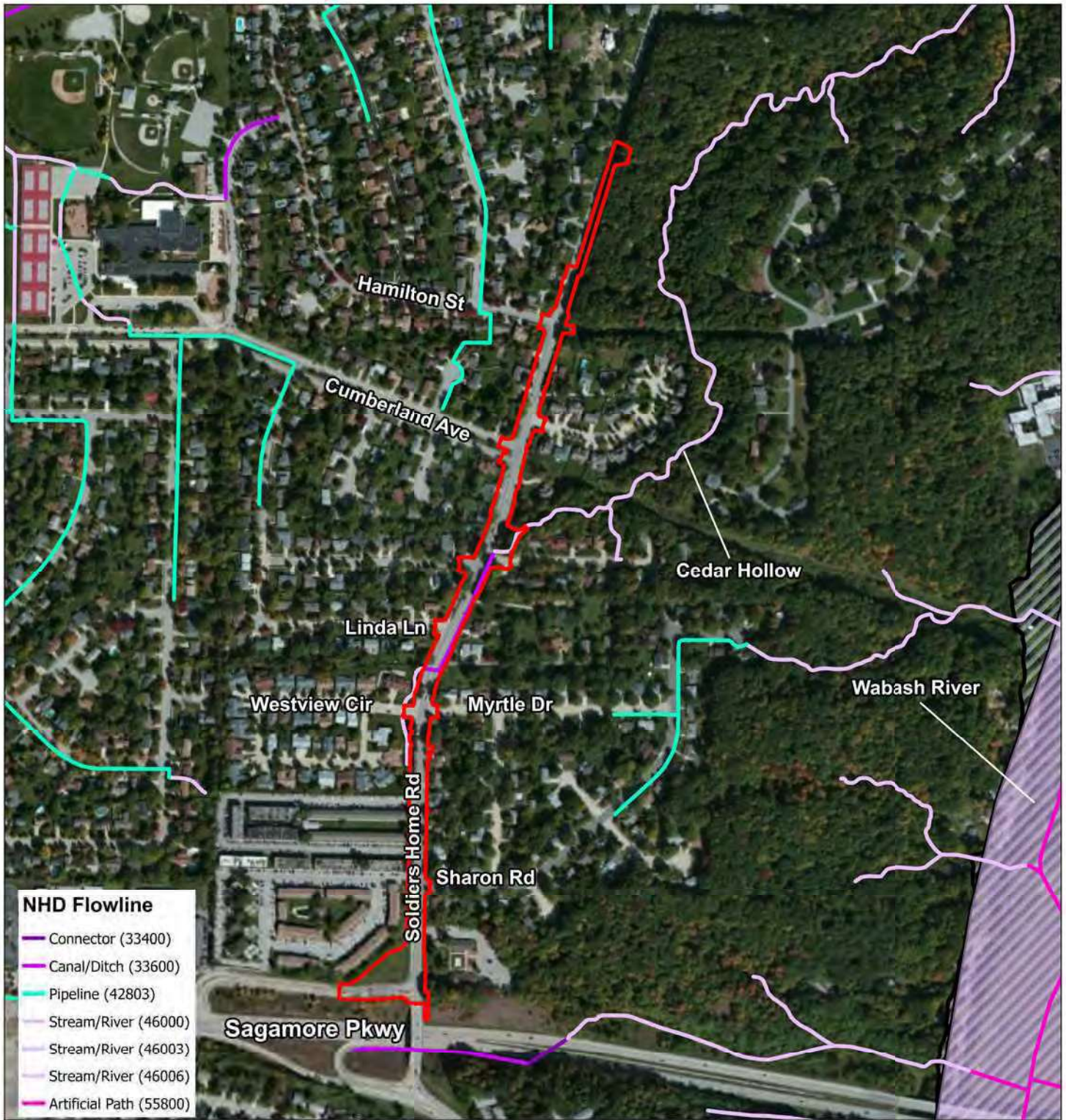
All locations approximate
 Sources: ESRI World Imagery Clarity (2022)
 NRCS, Soil Survey of Tippecanoe County, IN (1998)
 USFWS, National Wetland Inventory



0 250 500 1,000
 Feet 



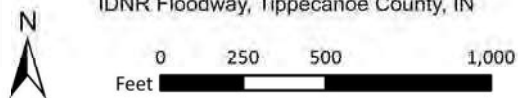
Exh. 3



- Investigated Area (IA)
- IDNR Floodway
- Floodplain - Zone A/AE - 1% Annual Chance

Exhibit 4A - IDNR Floodway, FIRM, and NHD Map
 Soldiers Home Rd
 Road Improvements
 Tippecanoe County, Indiana
 Des. No. 1401291 and 2201253
 Metric Project No. 21-0055
 Map Date: 1/9/2025
 Map Author: Lara Jones

All locations approximate
 Sources: ESRI World Imagery Clarity (2022)
 USGS, National Hydrography Dataset
 US FEMA, Flood Insurance Rate Map
 IDNR Floodway, Tippecanoe County, IN

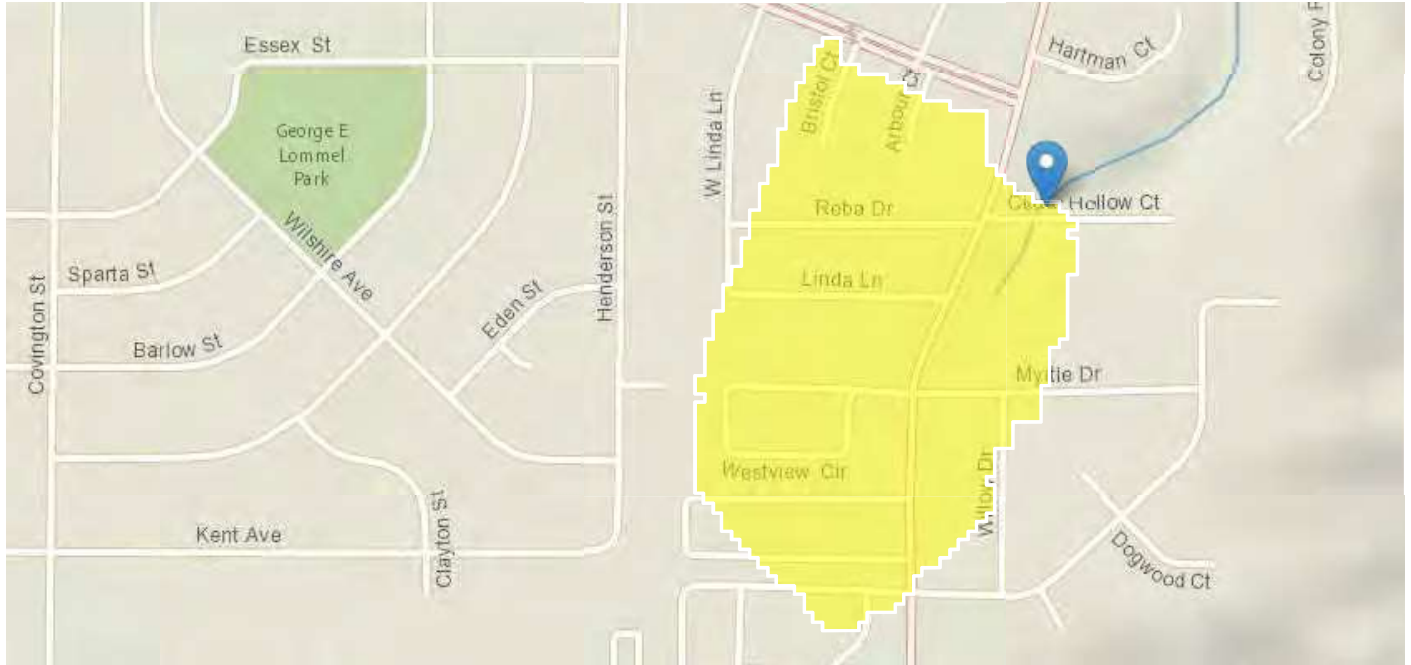


Exh. 4A

Exh. 4B - StreamStats Report
 Soldiers Home Rd
 Road Improvements
 Tippecanoe County, Indiana
 Des. No. 1401291 and 2201253
 Metric Project No. 21-0055
 Date Generated: 1/9/2025

StreamStats Report

Region ID: IN
Workspace ID: IN20250109193606284000
Clicked Point (Latitude, Longitude): 40.45815, -86.90134
Time: 2025-01-09 14:36:27 -0500



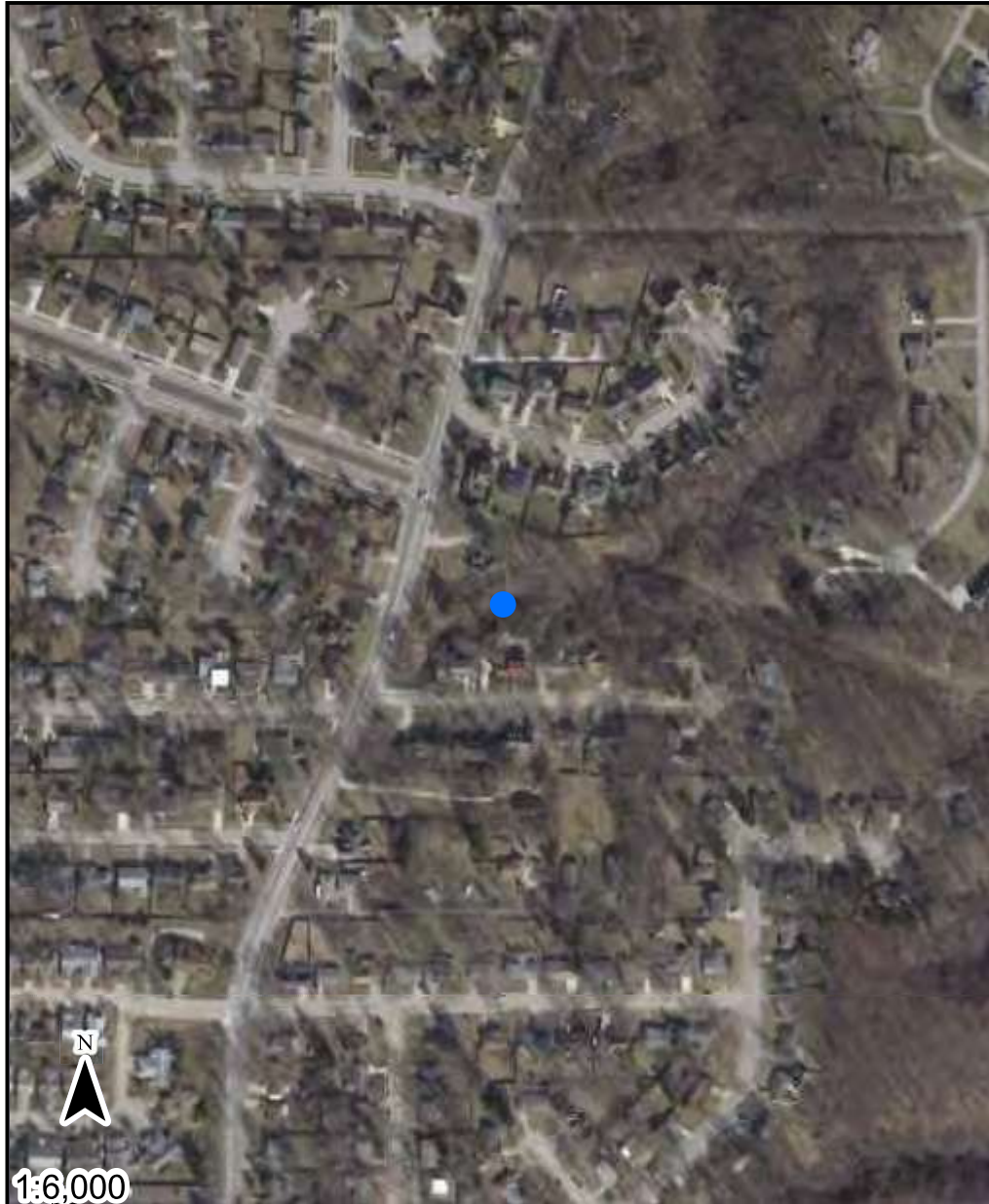
Collapse All

➤ Basin Characteristics

Parameter Code	Parameter Description	Value	Unit
CONTDA	Area that contributes flow to a point on a stream	0.068	square miles
CSL10_85	Change in elevation divided by length between points 10 and 85 percent of distance along main channel to basin divide - main channel method not known	27.3	feet per mi

USGS Data Disclaimer: Unless otherwise stated, all data, metadata and related materials are considered to satisfy the quality standards relative to the purpose for which the data were collected. Although these data and associated metadata have been reviewed for accuracy and completeness and approved for release by the U.S. Geological Survey (USGS), no warranty expressed or implied is made regarding the display or utility of the data for other purposes, nor on all computer systems, nor shall the act of distribution constitute any such warranty.

USGS Software Disclaimer: This software has been approved for release by the U.S. Geological Survey (USGS). Although the software has been subjected to rigorous review, the USGS reserves the right to update the software as needed pursuant to further analysis and review. No warranty, expressed or implied, is made by the USGS or the U.S. Government as to the functionality of the software and related material nor shall the fact of release constitute any such warranty. Furthermore, the software is released on condition that neither the USGS nor the U.S. Government shall be held liable for any damages resulting from its authorized or unauthorized use.



- Point of Interest
- Base Flood Elevation Point
- POI
- Not Mapped
- FPA Jurisdictions
- RGB**
- Red: Band_1
- Green: Band_2
- Blue: Band_3

Exh. 4C - FARA Report
 Soldiers Home Rd
 Road Improvements
 Tippecanoe County, Indiana
 Des. No. 1401291 and 2201253
 Metric Project No. 21-0055
 Date Generated: 1/9/2025

Long: **-86.90113463425428**
 Lat: **40.458564561490526**

The information provided below is based on the point of interest shown in the map above.

County: **Tippecanoe**
 Stream Name:
Wabash River

Approximate Ground Elevation: **683.9 feet (NAVD88)**
 Base Flood Elevation: **533.5 Feet (NAVD88)**
 Drainage Area: **Not Available**

Best Available Flood Hazard Zone: **Not Mapped**
 National Flood Hazard Zone: **Not Mapped**

Is a Flood Control Act permit from the DNR needed for this location? **See following pages**

Is a local floodplain permit needed for this location? **Contact your local Floodplain Administrator-**

Floodplain Administrator: **Ryan O'Gara, Executive Director**

Community Jurisdiction: **West Lafayette, City proper**
 Phone: **(765) 423-9242**
 Email: **rogara@tippecanoe.in.gov**

US Army Corps of Engineers District: **Louisville**

APPENDIX A

Wetland Determination Data Sheets

Soldiers Home Rd (Des. 1401291 and 2201253)
Road Improvements
Waters Delineation Report
Tippecanoe County, Indiana
Metric Project No. 21-0055



Project/Site: Soldier's Home Road Project (Des. 1401291) / 21-0055 City/County: West Lafayette/Tippecanoe Sampling Date: 11/20/2024

Applicant/Owner: VS Engineering/INDOT State: IN Sampling Point: UP1

Investigator(s): Seth Snyder and Lara Jones Section, Township, Range: S 8, T 23 N, R 4 W

Landform (hillside, terrace, etc.): hillslope Local relief (concave, convex, none): convex

Slope (%): 5 Lat: 40.458187 Long: -86.901773 Datum: NAD 1983

Soil Map Unit Name: Strawn-Rodman complex, 18 to 50 percent slopes (SyF) - Nonhydic (0%) NWI classification: None

Are climatic / hydrologic conditions on the site typical for this time of year? Yes X No (If no, explain in Remarks.)

Are Vegetation No, Soil No, or Hydrology No significantly disturbed? Are "Normal Circumstances" present? Yes X No

Are Vegetation No, Soil No, or Hydrology No naturally problematic? (If needed, explain any answers in Remarks.)

SUMMARY OF FINDINGS – Attach site map showing sampling point locations, transects, important features, etc.

Hydrophytic Vegetation Present? Yes <u> </u> No <u>X</u> Hydric Soil Present? Yes <u> </u> No <u>X</u> Wetland Hydrology Present? Yes <u> </u> No <u>X</u>	Is the Sampled Area within a Wetland? Yes <u> </u> No <u>X</u>
---	--

Remarks:
Upland sampling point 1

VEGETATION – Use scientific names of plants.

<u>Tree Stratum</u> (Plot size: <u> </u>)	Absolute % Cover	Dominant Species?	Indicator Status																																	
1. <u>Quercus alba</u>	30	Yes	FACU	Dominance Test worksheet: Number of Dominant Species That Are OBL, FACW, or FAC: <u>1</u> (A) Total Number of Dominant Species Across All Strata: <u>6</u> (B) Percent of Dominant Species That Are OBL, FACW, or FAC: <u>16.7%</u> (A/B)																																
2. <u>Quercus muehlenbergii</u>	20	Yes	FACU																																	
3. <u>Celtis occidentalis</u>	10	No	FAC																																	
4. <u> </u>																																				
5. <u> </u>																																				
	60 =Total Cover																																			
<u>Sapling/Shrub Stratum</u> (Plot size: <u> </u>)																																				
1. <u>Lonicera maackii</u>	10	Yes	UPL	Prevalence Index worksheet: <table style="width:100%; border-collapse: collapse;"> <tr> <td style="text-align: right;">Total % Cover of:</td> <td></td> <td style="text-align: right;">Multiply by:</td> <td></td> </tr> <tr> <td>OBL species</td> <td style="text-align: center;">0</td> <td style="text-align: right;">x 1 =</td> <td style="text-align: center;">0</td> </tr> <tr> <td>FACW species</td> <td style="text-align: center;">0</td> <td style="text-align: right;">x 2 =</td> <td style="text-align: center;">0</td> </tr> <tr> <td>FAC species</td> <td style="text-align: center;">17</td> <td style="text-align: right;">x 3 =</td> <td style="text-align: center;">51</td> </tr> <tr> <td>FACU species</td> <td style="text-align: center;">60</td> <td style="text-align: right;">x 4 =</td> <td style="text-align: center;">240</td> </tr> <tr> <td>UPL species</td> <td style="text-align: center;">17</td> <td style="text-align: right;">x 5 =</td> <td style="text-align: center;">85</td> </tr> <tr> <td>Column Totals:</td> <td style="text-align: center;">94 (A)</td> <td></td> <td style="text-align: center;">376 (B)</td> </tr> <tr> <td>Prevalence Index = B/A =</td> <td></td> <td></td> <td style="text-align: center;">4.00</td> </tr> </table>	Total % Cover of:		Multiply by:		OBL species	0	x 1 =	0	FACW species	0	x 2 =	0	FAC species	17	x 3 =	51	FACU species	60	x 4 =	240	UPL species	17	x 5 =	85	Column Totals:	94 (A)		376 (B)	Prevalence Index = B/A =			4.00
Total % Cover of:		Multiply by:																																		
OBL species	0	x 1 =	0																																	
FACW species	0	x 2 =	0																																	
FAC species	17	x 3 =	51																																	
FACU species	60	x 4 =	240																																	
UPL species	17	x 5 =	85																																	
Column Totals:	94 (A)		376 (B)																																	
Prevalence Index = B/A =			4.00																																	
2. <u>Acer saccharum</u>	10	Yes	FACU																																	
3. <u> </u>																																				
4. <u> </u>																																				
5. <u> </u>																																				
	20 =Total Cover																																			
<u>Herb Stratum</u> (Plot size: <u> </u>)																																				
1. <u>Eutrochium purpureum</u>	5	Yes	FAC	Hydrophytic Vegetation Indicators: <u> </u> 1 - Rapid Test for Hydrophytic Vegetation <u> </u> 2 - Dominance Test is >50% <u> </u> 3 - Prevalence Index is ≤3.0 ¹ <u> </u> 4 - Morphological Adaptations ¹ (Provide supporting data in Remarks or on a separate sheet) <u> </u> Problematic Hydrophytic Vegetation ¹ (Explain) ¹ Indicators of hydric soil and wetland hydrology must be present, unless disturbed or problematic.																																
2. <u>Symphytotrichum cordifolium</u>	5	Yes	UPL																																	
3. <u> </u>																																				
4. <u> </u>																																				
5. <u> </u>																																				
6. <u> </u>																																				
7. <u> </u>																																				
8. <u> </u>																																				
9. <u> </u>																																				
10. <u> </u>																																				
	10 =Total Cover																																			
<u>Woody Vine Stratum</u> (Plot size: <u> </u>)																																				
1. <u>Smilax tamnoides</u>	2	No	FAC	Hydrophytic Vegetation Present? Yes <u> </u> No <u>X</u>																																
2. <u>Hedera helix</u>	2	No	UPL																																	
	4 =Total Cover																																			

Remarks: (Include photo numbers here or on a separate sheet.)

SOIL

Sampling Point: UP1

Profile Description: (Describe to the depth needed to document the indicator or confirm the absence of indicators.)							
Depth (inches)	Matrix		Redox Features			Texture	Remarks
	Color (moist)	%	Color (moist)	%	Type ¹		
0-20	10YR 3/1	100				Loamy/Clayey	

¹Type: C=Concentration, D=Depletion, RM=Reduced Matrix, MS=Masked Sand Grains.

²Location: PL=Pore Lining, M=Matrix.

Hydric Soil Indicators: <input type="checkbox"/> Histosol (A1) <input type="checkbox"/> Histic Epipedon (A2) <input type="checkbox"/> Black Histic (A3) <input type="checkbox"/> Hydrogen Sulfide (A4) <input type="checkbox"/> Stratified Layers (A5) <input type="checkbox"/> 2 cm Muck (A10) <input type="checkbox"/> Depleted Below Dark Surface (A11) <input type="checkbox"/> Thick Dark Surface (A12) <input type="checkbox"/> Sandy Mucky Mineral (S1) <input type="checkbox"/> 5 cm Mucky Peat or Peat (S3)	<input type="checkbox"/> Sandy Gleyed Matrix (S4) <input type="checkbox"/> Sandy Redox (S5) <input type="checkbox"/> Stripped Matrix (S6) <input type="checkbox"/> Dark Surface (S7) <input type="checkbox"/> Loamy Mucky Mineral (F1) <input type="checkbox"/> Loamy Gleyed Matrix (F2) <input type="checkbox"/> Depleted Matrix (F3) <input type="checkbox"/> Redox Dark Surface (F6) <input type="checkbox"/> Depleted Dark Surface (F7) <input type="checkbox"/> Redox Depressions (F8)	Indicators for Problematic Hydric Soils³: <input type="checkbox"/> Iron-Manganese Masses (F12) <input type="checkbox"/> Red Parent Material (F21) <input type="checkbox"/> Very Shallow Dark Surface (F22) <input type="checkbox"/> Other (Explain in Remarks)
---	--	--

³Indicators of hydrophytic vegetation and wetland hydrology must be present, unless disturbed or problematic.

Restrictive Layer (if observed): Type: _____ Depth (inches): _____	Hydric Soil Present? Yes <input type="checkbox"/> No <input checked="" type="checkbox"/>
---	---

Remarks:
Gravel mix throughout soil profile.

HYDROLOGY

Wetland Hydrology Indicators: <u>Primary Indicators (minimum of one is required; check all that apply)</u>		<u>Secondary Indicators (minimum of two required)</u>
<input type="checkbox"/> Surface Water (A1) <input type="checkbox"/> High Water Table (A2) <input type="checkbox"/> Saturation (A3) <input type="checkbox"/> Water Marks (B1) <input type="checkbox"/> Sediment Deposits (B2) <input type="checkbox"/> Drift Deposits (B3) <input type="checkbox"/> Algal Mat or Crust (B4) <input type="checkbox"/> Iron Deposits (B5) <input type="checkbox"/> Inundation Visible on Aerial Imagery (B7) <input type="checkbox"/> Sparsely Vegetated Concave Surface (B8)	<input type="checkbox"/> Water-Stained Leaves (B9) <input type="checkbox"/> Aquatic Fauna (B13) <input type="checkbox"/> True Aquatic Plants (B14) <input type="checkbox"/> Hydrogen Sulfide Odor (C1) <input type="checkbox"/> Oxidized Rhizospheres on Living Roots (C3) <input type="checkbox"/> Presence of Reduced Iron (C4) <input type="checkbox"/> Recent Iron Reduction in Tilled Soils (C6) <input type="checkbox"/> Thin Muck Surface (C7) <input type="checkbox"/> Gauge or Well Data (D9) <input type="checkbox"/> Other (Explain in Remarks)	<input type="checkbox"/> Surface Soil Cracks (B6) <input type="checkbox"/> Drainage Patterns (B10) <input type="checkbox"/> Dry-Season Water Table (C2) <input type="checkbox"/> Crayfish Burrows (C8) <input type="checkbox"/> Saturation Visible on Aerial Imagery (C9) <input type="checkbox"/> Stunted or Stressed Plants (D1) <input type="checkbox"/> Geomorphic Position (D2) <input type="checkbox"/> FAC-Neutral Test (D5)

Field Observations: Surface Water Present? Yes <input type="checkbox"/> No <input checked="" type="checkbox"/> Depth (inches): _____ Water Table Present? Yes <input type="checkbox"/> No <input checked="" type="checkbox"/> Depth (inches): _____ Saturation Present? Yes <input type="checkbox"/> No <input checked="" type="checkbox"/> Depth (inches): _____ (includes capillary fringe)	Wetland Hydrology Present? Yes <input type="checkbox"/> No <input checked="" type="checkbox"/>
---	---

Describe Recorded Data (stream gauge, monitoring well, aerial photos, previous inspections), if available:

Remarks:

APPENDIX B

HHEI/QHEI Data Forms

Soldiers Home Rd (Des. 1401291 and 2201253)
Road Improvements
Waters Delineation Report
Tippecanoe County, Indiana
Metric Project No. 21-0055





Primary Headwater Habitat Evaluation Form

HHEI Score (sum of metrics 1, 2, 3) :

46

SITE NAME/LOCATION Cedar Hollow, West Lafayette, Indiana/21-0055

SITE NUMBER _____ RIVER BASIN _____ DRAINAGE AREA (mi²) 0.068

LENGTH OF STREAM REACH (ft) _____ LAT. 40.458412 LONG. -86.901537 RIVER CODE _____ RIVER MILE _____

DATE 11/20/2024 SCORER SS, LJ COMMENTS _____

NOTE: Complete All Items On This Form - Refer to "Field Evaluation Manual for Ohio's PHWH Streams" for Instructions

STREAM CHANNEL NONE / NATURAL CHANNEL RECOVERED RECOVERING RECENT OR NO RECOVERY

MODIFICATIONS:

1. SUBSTRATE (Estimate percent of every type of substrate present. Check ONLY two predominant substrate TYPE boxes (Max of 40). Add total number of significant substrate types found (Max of 8). Final metric score is sum of boxes A & B.

TYPE	PERCENT	TYPE	PERCENT
<input type="checkbox"/> BLDR SLABS [16 pts]	_____	<input type="checkbox"/> SILT [3 pt]	_____
<input type="checkbox"/> BOULDER (>256 mm) [16 pts]	_____	<input type="checkbox"/> LEAF PACK/WOODY DEBRIS [3 pts]	_____
<input type="checkbox"/> BEDROCK [16 pt]	_____	<input type="checkbox"/> FINE DETRITUS [3 pts]	_____
<input type="checkbox"/> COBBLE (65-256 mm) [12 pts]	_____	<input type="checkbox"/> CLAY or HARDPAN [0 pt]	_____
<input type="checkbox"/> GRAVEL (2-64 mm) [9 pts]	_____	<input type="checkbox"/> MUCK [0 pts]	_____
<input checked="" type="checkbox"/> SAND (<2 mm) [6 pts]	<u>80</u>	<input checked="" type="checkbox"/> ARTIFICIAL [3 pts]	<u>20</u>

Total of Percentages of Bldr Slabs, Boulder, Cobble, Bedrock = _____ (A) **9** (B) **2**

SCORE OF TWO MOST PREDOMINATE SUBSTRATE TYPES: _____ TOTAL NUMBER OF SUBSTRATE TYPES: _____

2. Maximum Pool Depth (Measure the maximum pool depth within the 61 meter (200 ft) evaluation reach at the time of evaluation. Avoid plunge pools from road culverts or storm water pipes) (Check ONLY one box):

<input type="checkbox"/> > 30 centimeters [20 pts]	<input checked="" type="checkbox"/> > 5 cm - 10 cm [15 pts]
<input type="checkbox"/> > 22.5 - 30 cm [30 pts]	<input type="checkbox"/> < 5 cm [5 pts]
<input type="checkbox"/> > 10 - 22.5 cm [25 pts]	<input type="checkbox"/> NO WATER OR MOIST CHANNEL [0 pts]

COMMENTS _____ MAXIMUM POOL DEPTH (centimeters): _____

3. BANK FULL WIDTH (Measured as the average of 3-4 measurements) (Check ONLY one box):

<input type="checkbox"/> > 4.0 meters (> 13') [30 pts]	<input type="checkbox"/> > 1.0 m - 1.5 m (> 3' 3" - 4' 8") [15 pts]
<input type="checkbox"/> > 3.0 m - 4.0 m (> 9' 7" - 13') [25 pts]	<input type="checkbox"/> ≤ 1.0 m (≤ 3' 3") [5 pts]
<input checked="" type="checkbox"/> > 1.5 m - 3.0 m (> 4' 8" - 9' 7") [20 pts]	

COMMENTS _____ AVERAGE BANKFULL WIDTH (meters) **2.2**

HHEI Metric Points

Substrate Max = 40

11

A + B

Pool Depth Max = 30

15

Bankfull Width Max=30

20

This information must also be completed

RIPARIAN ZONE AND FLOODPLAIN QUALITY ☆NOTE: River Left (L) and Right (R) as looking downstream☆

RIPARIAN WIDTH		FLOODPLAIN QUALITY	
L	R	L	R
<input type="checkbox"/>	<input type="checkbox"/>	<input type="checkbox"/>	<input type="checkbox"/>
Wide >10m		Mature Forest, Wetland	
<input type="checkbox"/>	<input type="checkbox"/>	<input checked="" type="checkbox"/>	<input checked="" type="checkbox"/>
Moderate 5-10m		Immature Forest, Shrub or Old Field	
<input checked="" type="checkbox"/>	<input checked="" type="checkbox"/>	<input type="checkbox"/>	<input type="checkbox"/>
Narrow <5m		Residential, Park, New Field	
<input type="checkbox"/>	<input type="checkbox"/>	<input type="checkbox"/>	<input type="checkbox"/>
None		Fenced Pasture	
<input type="checkbox"/>	<input type="checkbox"/>	<input type="checkbox"/>	<input type="checkbox"/>
		Conservation Tillage	
		Urban or Industrial	
		Open Pasture, Row Crop	
		Mining or Construction	

COMMENTS _____

FLOW REGIME (At Time of Evaluation) (Check ONLY one box):

<input type="checkbox"/> Stream Flowing	<input checked="" type="checkbox"/> Moist Channel, isolated pools, no flow (Intermittent)
<input type="checkbox"/> Subsurface flow with isolated pools (Interstitial)	<input type="checkbox"/> Dry channel, no water (Ephemeral)

COMMENTS _____

SINUOSITY (Number of bends per 61 m (200 ft) of channel) (Check ONLY one box):

<input type="checkbox"/> None	<input type="checkbox"/> 1.0	<input type="checkbox"/> 2.0	<input type="checkbox"/> 3.0
<input checked="" type="checkbox"/> 0.5	<input type="checkbox"/> 1.5	<input type="checkbox"/> 2.5	<input type="checkbox"/> >3

STREAM GRADIENT ESTIMATE

Flat (0.5 ft/100 ft) Flat to Moderate Moderate (2 ft/100 ft) Moderate to Severe Severe (10 ft/100 ft)

ADDITIONAL STREAM INFORMATION (This Information Must Also be Completed):

QHEI PERFORMED? - Yes No QHEI Score 45 (If Yes, Attach Completed QHEI Form)

DOWNSTREAM DESIGNATED USE(S)

- WWH Name: _____ Distance from Evaluated Stream _____
 CWH Name: _____ Distance from Evaluated Stream _____
 EWH Name: _____ Distance from Evaluated Stream _____

MAPPING: ATTACH COPIES OF MAPS, INCLUDING THE ENTIRE WATERSHED AREA. CLEARLY MARK THE SITE LOCATION

USGS Quadrangle Name: _____ NRCS Soil Map Page: _____ NRCS Soil Map Stream Order _____

County: _____ Township / City: _____

MISCELLANEOUS

Base Flow Conditions? (Y/N): _____ Date of last precipitation: _____ Quantity: _____

Photograph Information: _____

Elevated Turbidity? (Y/N): _____ Canopy (% open): _____

Were samples collected for water chemistry? (Y/N): _____ (Note lab sample no. or id. and attach results) Lab Number: _____

Field Measures: Temp (°C) _____ Dissolved Oxygen (mg/l) _____ pH (S.U.) _____ Conductivity (µmhos/cm) _____

Is the sampling reach representative of the stream (Y/N) _____ If not, please explain: _____

Additional comments/description of pollution impacts: _____

BIOTIC EVALUATION

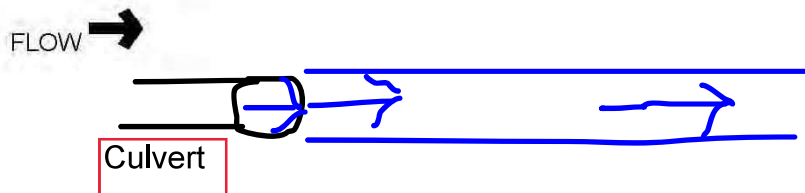
Performed? (Y/N): _____ (If Yes, Record all observations. Voucher collections optional. NOTE: all voucher samples must be labeled with the site ID number. Include appropriate field data sheets from the Primary Headwater Habitat Assessment Manual)

Fish Observed? (Y/N) _____ Voucher? (Y/N) _____ Salamanders Observed? (Y/N) _____ Voucher? (Y/N) _____
Frogs or Tadpoles Observed? (Y/N) _____ Voucher? (Y/N) _____ Aquatic Macroinvertebrates Observed? (Y/N) _____ Voucher? (Y/N) _____

Comments Regarding Biology: _____

DRAWING AND NARRATIVE DESCRIPTION OF STREAM REACH (This must be completed):

Include important landmarks and other features of interest for site evaluation and a narrative description of the stream's location



APPENDIX G: Public Involvement

Sample
NOTICE OF SURVEY

October 14, 2021

RE: Soldier's Home Road
West Lafayette, Indiana

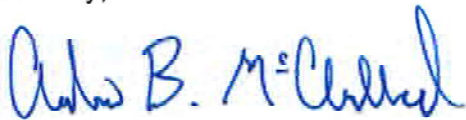
Dear Property Owner:

Our information indicates that you own or occupy property near this proposed highway project. Our employees will be doing a survey of the project area in the near future. It may be necessary for them to come onto your property to complete this work. This is allowed by law by Indiana Code IC 8-23-7-26. They will show you their identification, if you are available, before coming onto your property. If you have sold this property, or it is occupied by someone else, please let us know the name and address of the new owner or current occupant so we can contact them about the survey.

At this stage we generally do not know what effect, if any, our project may eventually have on your property. If we determine later that your property is involved, we will contact you with additional information.

The survey work will include mapping the location of features such as trees, buildings, fences and drives, and obtaining ground elevations. The survey work may also include the identification and mapping of wetlands, archaeological investigations (which may include excavation of small shovel test probes), and various other environmental studies. The survey is needed for the proper planning and design of this highway project. Please be assured of our sincere desire to cause you as little inconvenience as possible during this survey. If any problems do occur, please contact our field crew or contact me at the phone number or address shown herein.

Sincerely,



VS Engineering, Inc.
Andrew B. McClelland, P.S.
Project Surveyor
317-293-3542, x-178

Des. No. 1401291



The City of West Lafayette will be hosting a public design input session for the Soldiers Home Road project, between Old US 52 to Kalberer Road, which is currently in the Design Phase. The meeting will be held on **Thursday, April 13, 2023 at 6:30 pm in the Cumberland Elementary School's gymnasium, 600 Cumberland Avenue, West Lafayette.**

Public information will be shared regarding the Soldiers Home Road project goals, scope, and duration. Questions about this project may be directed to the Engineering Department at 765-807-8980 or to Ben Anderson, Public Works Director, at 765-404-8441.

Email: engineering@westlafayette.in.gov
banderson@westlafayette.in.gov



The City of West Lafayette will be hosting a public design input session for the Soldiers Home Road project, between Old US 52 to Kalberer Road, which is currently in the Design Phase. The meeting will be held on **Thursday, April 13, 2023 at 6:30 pm in the Cumberland Elementary School's gymnasium, 600 Cumberland Avenue, West Lafayette.**

Public information will be shared regarding the Soldiers Home Road project goals, scope, and duration. Questions about this project may be directed to the Engineering Department at 765-807-8980 or to Ben Anderson, Public Works Director, at 765-404-8441.

Email: engineering@westlafayette.in.gov
banderson@westlafayette.in.gov



The City of West Lafayette will be hosting a public design input session for the Soldiers Home Road project, between Old US 52 to Kalberer Road, which is currently in the Design Phase. The meeting will be held on **Thursday, April 13, 2023 at 6:30 pm in the Cumberland Elementary School's gymnasium, 600 Cumberland Avenue, West Lafayette.**

Public information will be shared regarding the Soldiers Home Road project goals, scope, and duration. Questions about this project may be directed to the Engineering Department at 765-807-8980 or to Ben Anderson, Public Works Director, at 765-404-8441.

Email: engineering@westlafayette.in.gov
banderson@westlafayette.in.gov

Public Design Input Session Sign-in Sheet Soldiers Home Road Reconstruction, April 13, 2023

Name	Address	Phone	E-mail
Joseph and Janet Blair			

Loischa Dulha			
Nicole Klinkner			
TOM & Jean Robertson			
Barbara Gotham			
Marcia Strigin			
Shane Stigler			
Kod & Gretchen Bertolot			
Curt Wehner			
Wyatt Hooker			
Myron Miller			
Brian Metzger			
JASON ANDERSON			
Looff Co			

Public Design Input Session Sign-in Sheet
 Soldiers Home Road Reconstruction, April 13, 2023

Name	Address	Phone	E-mail
Randy Strasser - V5			
Vim Strong			
Stu KLINE			
PAT SMITH			
Teresa + Kevin Heese			
Andrew Gray			
Esmatullah Shandaad			
Charles Seif			
Kashy Waters			
Seencer Cowdell			
Fred Wischere			
Linda DeBoy			
John Meluch			
Connie Hahn			
KEVIN WESSELMAN			
Amber Martin			

Jessica Ryan DeBorch
Jan Scarcelli

FAN WATTELL

Tim & Karen Pourpoint

Kathy Boschen

Naderdd Pimurov/Doug tsbn

Carrie Fedigo

Qingqi Ni

Catherine Malady

Nadia Bechler

Ramona Kuhns

Dave McKinnis

Cathy "

Daniel & Trina Pierce

Inis O'Donnell Bellisario

Jeremy Foote

JOHN SCHUMANN

Karen Atkinson

Public Design Input Session Sign-in Sheet
 Soldiers Home Road Reconstruction, April 13, 2023

Name	Address	Phone	E-mail
Sandy Shoemaker			
Joni Jesse			
John Moore			
Sally Crow			
PAT LAVIN			
Dana Janiak-Couture			
Frank Lukes			
James Henrich			
Jodi Young			
Diana Relf			
Derval Dickson			
Les White			
Sandra Kelly			
SEAN SASSEN			
Gerard Maslucca			
WALTER MARADY			

Public Design Input Session Sign-in Sheet
 Soldiers Home Road Reconstruction, April 13, 2023

Name	Address	Phone	E-mail
Sheila Hooker			
Kenneth Rye			
Carol Cox			
John Cox			
Chip Goldsberry			
JAY BRANAMAN			
Duane D. Donlip			
Ann Piechota			
Jessica Hinman			
Mary Campbell			
Radway Noel			
Joel La Fleur			
CHARLES GICK			
Shelly Lange			
etc. etc.			
Amy Pookay			



SOLDIERS HOME ROAD RECONSTRUCTION PROJECT – FACT SHEET PUBLIC DESIGN INPUT SESSION - APRIL 13, 2023

MEETING PURPOSE

To solicit public design input regarding the current preliminary design. A future meeting will present refined design details for further public review and comment.

PROJECT GOALS

The proposed improvement is consistent with the objectives set out in the community's 2050 Metropolitan Transportation Plan:

- Preserving capacity and improving efficiency
- Enhancing mobility and accessibility
- Improving safety and security for all road users
- Improving sustainability

The project seeks to address continuing community growth, particularly development in areas north of the project. Pedestrian and bicycle amenities are currently limited. The Metropolitan Transportation Plan recommends an urban cross section for the corridor, along with sidewalk and trail. The proposed multi-use trail links the Nighthawk, Sagamore Parkway, and Happy Hollow Trails at the south end of the project with the Northwest Greenway Trail at the north end, as well as to future trail extensions to the north.

PRELIMINARY PROJECT SCOPE

- Reconstruct Soldiers Home Road in two phases:
 - **Phase 1:** Sagamore Parkway to Hamilton Street
 - **Phase 2:** Hamilton Street to Kalberer Road
- Construct the roadway section shown on the attached **Typical Roadway Section** (page 3). It consists of one 11 ft travel lane in each direction, a 12 ft center two-way left turn lane, a 10 ft multi-use trail, a 5 ft sidewalk, 5 ft landscaped buffers, curb and gutter, a closed storm drainage system, new pavement, and lighting. Rural type sections will be converted to urban.
- Relocate utilities to avoid conflicts with the proposed construction.
- Replace the Sagamore Parkway Ramp intersection with a **Roundabout** to improve intersection level of service. Maintain all other intersections in their current traditional unsignalized configuration. Provide improved capacity and efficiency by adding suitable left turn lanes at street intersections and a center two-way left turn lane elsewhere.
- Replace drive approaches using concrete pavement to the proposed right-of-way line.
- Connect the proposed sidewalks to existing sidewalks along the intersecting streets, and construct accessible curb ramps at each intersection. Provide trail connections at existing trails.

ANTICIPATED RIGHT-OF-WAY

Permanent and/or temporary right-of-way will typically be required on each side of the roadway to accommodate the new roadway width, trail, sidewalk, necessary grading, drive approaches, and utilities. The additional right-of-way width required is unique to each property, but is expected to commonly range from 5 to 10 feet.

PRELIMINARY TRAFFIC MAINTENANCE

The attached preliminary **Maintenance of Traffic** schematic (page 4) shows the project phasing limits and proposed detours. Each of the two phases will be broken into multiple sub-phases (not shown) to enhance resident access and reduce detour times and lengths. Street and driveway approaches with only a single outlet will be constructed half at a time to preserve access.

FUNDING

The project utilizes federal funds, with local matching funds.

TENTATIVE DATES

- Begin Right-of-Way Acquisition: Mid - 2024
- Begin Phase 1 Construction: April, 2028
- Duration, Phase 1 Construction: One Year
- Begin Phase 2 Construction: April, 2029
- Duration, Phase 2 Construction: One Year

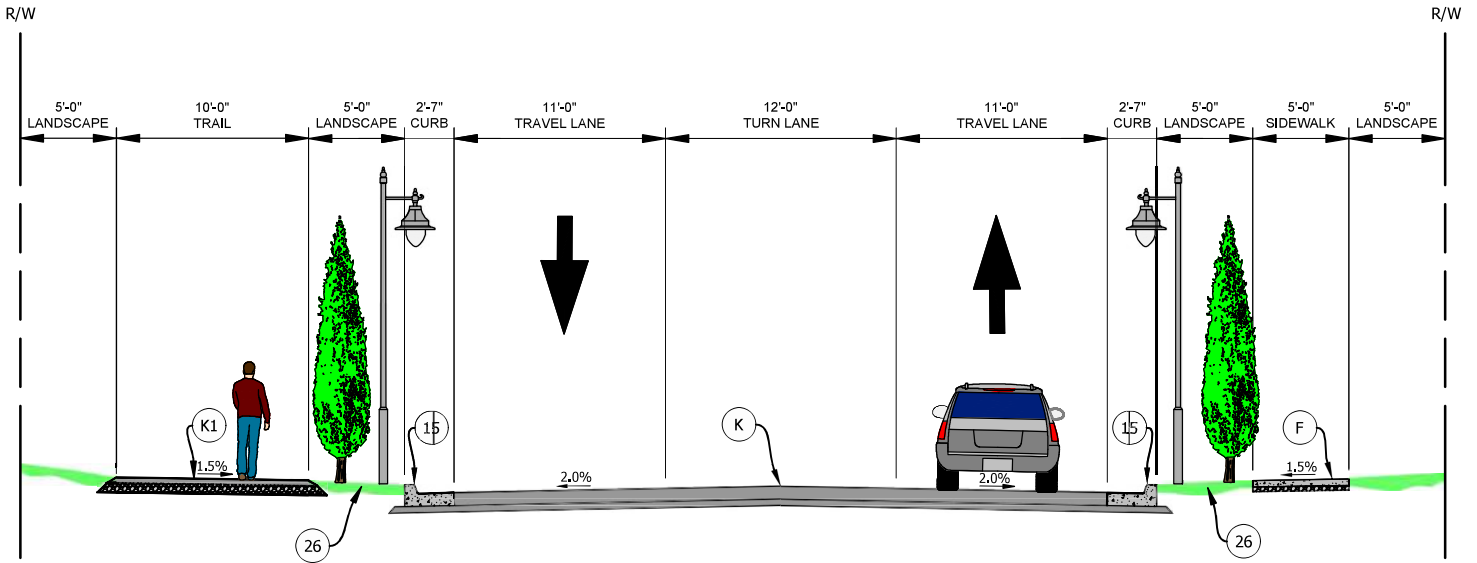
PUBLIC INVOLVEMENT

- Initial Public Design Input Session (Preliminary Plans Stage), April, 2023
- Opportunity to Request Public Hearing (Environmental Document Approval), Early 2024
- Second Public Design Input Session (Final Plans Stage), Early 2025

CONTACT INFORMATION

Ben Anderson
Public Works Director
705 S. River Road
West Lafayette, IN 47906
Phone: 765-404-8441
E-mail: banderson@westlafayette.in.gov

TYPICAL SECTION



TYPICAL SECTION - SOLDIERS HOME ROAD

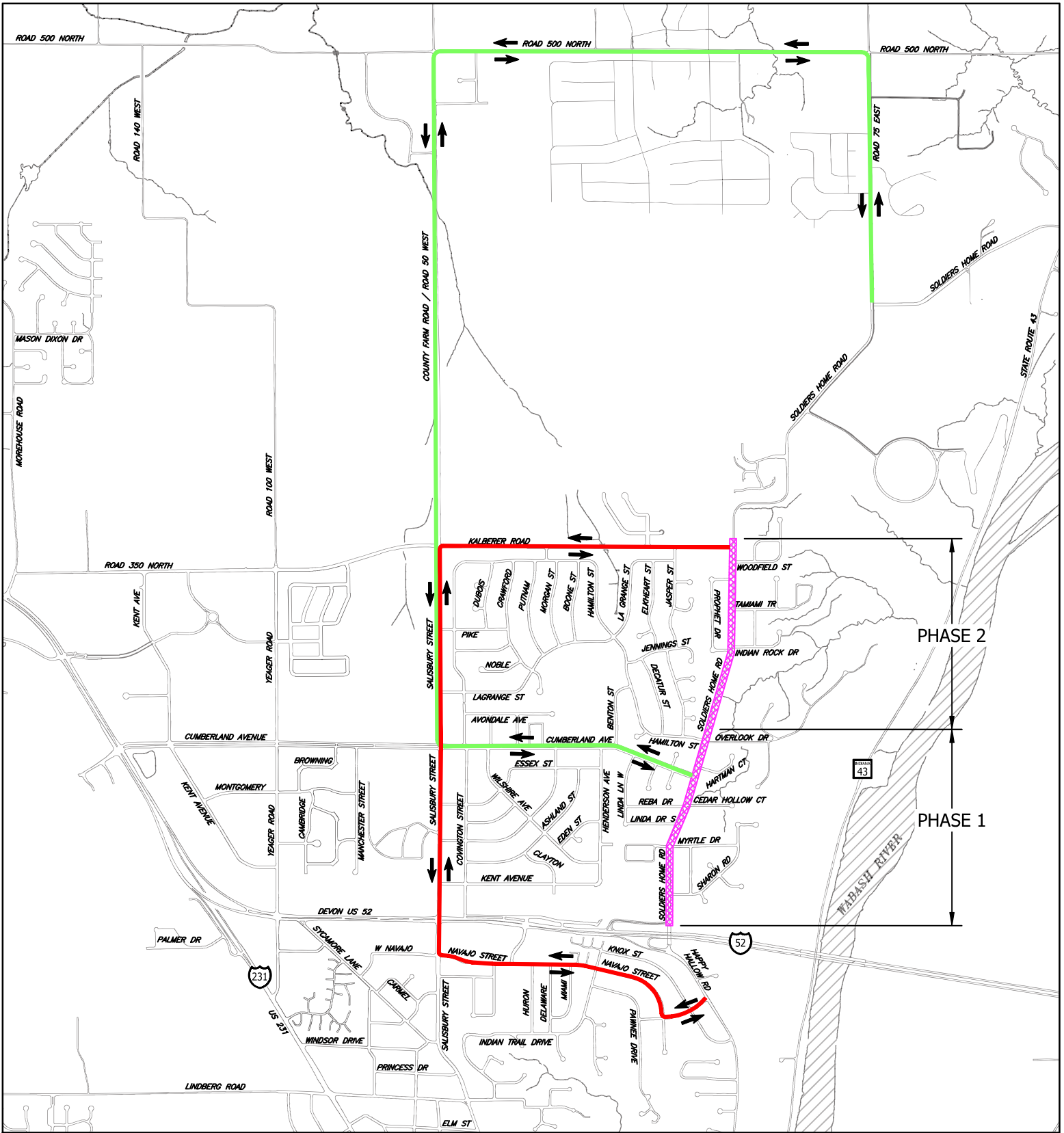
LEGEND

- (K) Asphalt for Roadway
- (K1) Asphalt Trail
- (F) Concrete Sidewalk
- (15) Concrete Curb & Gutter
- (26) Sodding

NOTES:

Trail location changes from the west side of Soldiers Home Road to the East side north of Hamilton Street.

MAINTENANCE OF TRAFFIC







PHASE 2

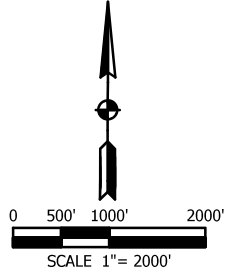
PHASE 1

PHASE 1 DETOUR:
Navajo Street to
Salisbury Street to
Kalberer Road

PHASE 2 DETOUR:
Cumberland Avenue to
Salisbury Street
(County Farm Road) to
C.R. 500 North to
C.R. 75 East

LEGEND	
	Construction Area
	Traffic Flow Direction
	Phase 1 Detour Route
	Phase 2 Detour Route

Notes:
Access to driveways to be maintained at all times.



0 500' 1000' 2000'
SCALE 1" = 2000'



The City of West Lafayette will be hosting a public information session for the reconstruction of Soldiers Home Road between Sagamore Parkway and Kalberer Road.

This meeting will be held on **Thursday, January 18, 2024 at 6:30 PM** in **Community Rooms 1, 2, and 3** at the **West Lafayette Wellness Center, 1101 Kalberer Road, West Lafayette.**

Public information will be shared regarding the Soldiers Home Road project goals, scope, and duration.

Questions about this project may be directed to:

Engineering Department
(765) 807-8980
engineering@westlafayette.in.gov



The City of West Lafayette will be hosting a public information session for the reconstruction of Soldiers Home Road between Sagamore Parkway and Kalberer Road.

This meeting will be held on **Thursday, January 18, 2024 at 6:30 PM** in **Community Rooms 1, 2, and 3** at the **West Lafayette Wellness Center, 1101 Kalberer Road, West Lafayette.**

Public information will be shared regarding the Soldiers Home Road project goals, scope, and duration.

Questions about this project may be directed to:

Engineering Department
(765) 807-8980
engineering@westlafayette.in.gov



The City of West Lafayette will be hosting a public information session for the reconstruction of Soldiers Home Road between Sagamore Parkway and Kalberer Road.

This meeting will be held on **Thursday, January 18, 2024 at 6:30 PM** in **Community Rooms 1, 2, and 3** at the **West Lafayette Wellness Center, 1101 Kalberer Road, West Lafayette.**

Public information will be shared regarding the Soldiers Home Road project goals, scope, and duration.

Questions about this project may be directed to:

Engineering Department
(765) 807-8980
engineering@westlafayette.in.gov

Second Public Design Input Session Sign-in Sheet Soldiers Home Road Reconstruction, January 18, 2024

Name	Address	Phone	E-mail
Mike Silver			
Annette & Fave Smith			
JOE VANDERBILT			
Linda Young			
Chip Goldsberry			
Benny Carey			
Barbara Dey Gotham			
Jonathan Rustad			
JAY BRANAMAN			
JIM KIMURA			
ERIC FISHER			
Teresa Luse			
John Moore			
Carl Krieger			
Anorah Krieger			
Marissa Woolwine			

Name	Address	Phone	E-mail
Marcia Strigin	[REDACTED]	[REDACTED]	[REDACTED]
Adela Longe	[REDACTED]	[REDACTED]	[REDACTED]
Donna H. Longe	[REDACTED]	[REDACTED]	[REDACTED]
TELESEIDA	[REDACTED]	[REDACTED]	[REDACTED]
Hannah Martin	[REDACTED]	[REDACTED]	[REDACTED]
Jelly Longe	[REDACTED]	[REDACTED]	[REDACTED]
Diana Reif	[REDACTED]	[REDACTED]	[REDACTED]
Carol Davidson	[REDACTED]	[REDACTED]	[REDACTED]
CLIFTON IVY	[REDACTED]	[REDACTED]	[REDACTED]
Mary & Dwight McKay	[REDACTED]	[REDACTED]	[REDACTED]
APRIL TEEL	[REDACTED]	[REDACTED]	[REDACTED]
Montessori Sch	[REDACTED]	[REDACTED]	[REDACTED]
	[REDACTED]	[REDACTED]	[REDACTED]
	[REDACTED]	[REDACTED]	[REDACTED]
	[REDACTED]	[REDACTED]	[REDACTED]
	[REDACTED]	[REDACTED]	[REDACTED]

* _____

[Handwritten initials]

Second Public Design Input Session Sign-in Sheet
Soldiers Home Road Reconstruction, January 18, 2024

Name	Address	Phone	E-mail
Ann Pechota			
<i>[Handwritten signature]</i>			
April Delaney			
Pat Sudy Darwin			
Sheila Hooker			
Tabamara xxxxxx Ruzzeji			
Michiko Ruzzeji Ruzzeji			
Ashtley Kilbury			
James Smith			
CHRIS BSETO			
Alexandra Jordanov			
Fachuel Unisser and Mike Ruzzeji			
LINDA PFEIFFER			
Ben + Amanda Manning			
Sandra Kelly Sasser + Sean Sasser			
Sohn Moynihan			

Name	Address	Phone	E-mail
Kevin Luse	[REDACTED]	[REDACTED]	[REDACTED]
KEVIN MICHAEL MUMFORD	[REDACTED]	[REDACTED]	[REDACTED]
Catherine + Nancy Malachuk	[REDACTED]	[REDACTED]	[REDACTED]
Yinzhon Yao	[REDACTED]	[REDACTED]	[REDACTED]
Doug Poole	[REDACTED]	[REDACTED]	[REDACTED]
STU KUINE	[REDACTED]	[REDACTED]	[REDACTED]
Sally Murray	[REDACTED]	[REDACTED]	[REDACTED]
Linda DeBoy	[REDACTED]	[REDACTED]	[REDACTED]
Megan Federer	[REDACTED]	[REDACTED]	[REDACTED]
Genevieve Wang	[REDACTED]	[REDACTED]	[REDACTED]
Brian Metzger	[REDACTED]	[REDACTED]	[REDACTED]
Tanya Finkbeiner	[REDACTED]	[REDACTED]	[REDACTED]
ABRAHAM MORRIS	[REDACTED]	[REDACTED]	[REDACTED]
CHARLES GICK	[REDACTED]	[REDACTED]	[REDACTED]
Montessori School of Cortez	[REDACTED]	[REDACTED]	[REDACTED]

Second Public Design Input Session Sign-in Sheet
Soldiers Home Road Reconstruction, January 18, 2024

Name	Address	Phone	E-mail
Kenneth Pugh	[REDACTED]	[REDACTED]	[REDACTED]
Laurie Pugh			
Marguerite Kubly			



SOLDIERS HOME ROAD RECONSTRUCTION PROJECT – FACT SHEET SECOND PUBLIC DESIGN INPUT SESSION – JANUARY 18, 2024

MEETING PURPOSE

To solicit additional public review and comment based on further plan development following the Initial Public Design Input Meeting held in April, 2023. To provide responses to comments received at the initial meeting.

PROJECT GOALS

The proposed improvement is consistent with the objectives set out in the community's 2050 Metropolitan Transportation Plan:

- Preserving capacity and improving efficiency
- Enhancing mobility and accessibility
- Improving safety and security for all road users
- Improving sustainability

The project seeks to address continuing community growth, particularly development in areas north of the project. Pedestrian and bicycle amenities are currently limited. The Metropolitan Transportation Plan recommends an urban cross section for the corridor, along with sidewalk and trail. The proposed multi-use trail links the Nighthawk, Sagamore Parkway, and Happy Hollow Trails at the south end of the project with the Northwest Greenway Trail at the north end, as well as with future trail extensions to the north.

Speed management countermeasures continue to be evaluated for incorporation into the project. The current 30 mph posted speed is to be maintained.

CURRENT PROJECT SCOPE

- Reconstruct Soldiers Home Road in two phases:
 - **Phase 1:** Sagamore Parkway to Hamilton Street
 - **Phase 2:** Hamilton Street to Kalberer Road
- Construct the roadway section shown on the attached **Typical Roadway Section** (see page 4; the existing roadway section is shown on page 3 for reference). It consists of one 11 ft travel lane in each direction, a 12 ft center two-way left turn lane, a 10 ft multi-use trail, a 5 ft sidewalk, 5 ft landscaped buffers, curb and gutter, a closed storm drainage system, new pavement, and lighting. Rural type sections will be converted to urban. Lane widths are minimized to inhibit an increase in motorist speeds.
- Replace the Sagamore Parkway Ramp intersection with a **Roundabout** to improve intersection level of service. Maintain all other intersections in their current traditional unsignalized configuration. Provide improved capacity and efficiency by adding suitable left turn lanes at street intersections and a center two-way left turn lane elsewhere.
- Replace drive approaches using concrete pavement to the proposed right-of-way line, extending beyond this line within temporary right-of-way if needed to properly tie into the existing drive.
- Connect the proposed sidewalks to existing sidewalks along the intersecting streets and construct accessible curb ramps at each intersection. Provide connections to all existing trails.

ANTICIPATED RIGHT-OF-WAY

Permanent and/or temporary right-of-way will typically be required on each side of the roadway to accommodate the new roadway width, trail, sidewalk, necessary grading, drive approaches, and utilities. The additional right-of-way width required is unique to each property; it is expected to commonly range from 5 to 10 feet. Approximately 77 parcels will be required for the project.

PRELIMINARY TRAFFIC MAINTENANCE

The attached preliminary **Maintenance of Traffic** schematic (see page 5) shows the project phasing limits and proposed detours. Phasing and detours are shown in further detail on the preliminary plans. Each of the two project phases is broken into various sub-phases to enhance resident access and reduce detour times and lengths. Street and driveway approaches with only a single outlet are proposed to be constructed half at a time to preserve access.

FUNDING

The project utilizes federal funds, with local matching funds.

TENTATIVE DATES

- Begin Right-of-Way Acquisition: August, 2024
- Begin Phase 1 Construction: April, 2028
- Duration, Phase 1 Construction: One Year
- Begin Phase 2 Construction: April, 2029
- Duration, Phase 2 Construction: One Year

PUBLIC INVOLVEMENT SUMMARY

- Initial Public Design Input Session (Preliminary Plans Stage) - Held April, 2023
- Second Public Design Input Session (Final Plans Stage) - January, 2024
- Opportunity to Request Public Hearing (Environmental Document Approval) - Mid 2024
- Third Public Design Input Session (Final Plans Stage) - Early 2025

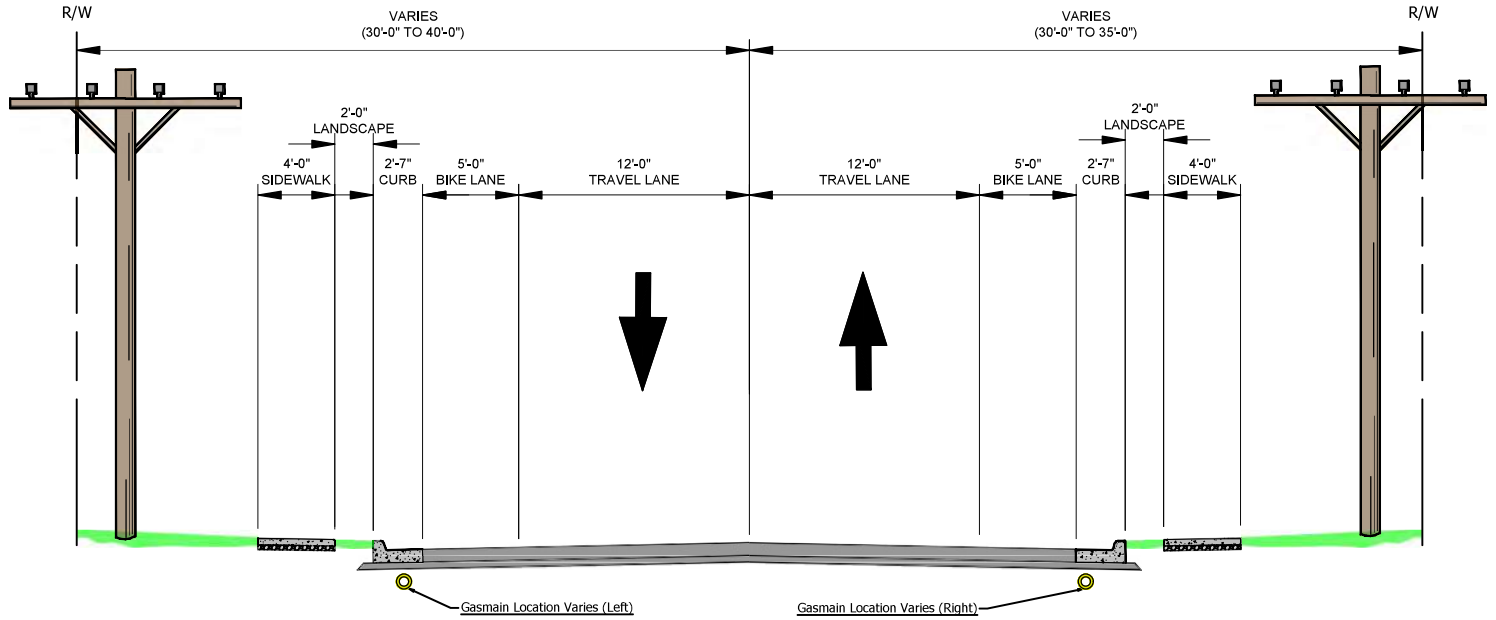
RESPONSES TO COMMENTS

Responses to Comments offered by the public at the Initial Public Design Input Meeting are attached (see pages 6 - 10).

CONTACT INFORMATION

Ben Anderson
Public Works Director
705 S. River Road
West Lafayette, IN 47906
Phone: 765-404-8441
E-mail: banderson@westlafayette.in.gov

EXISTING TYPICAL SECTIONS



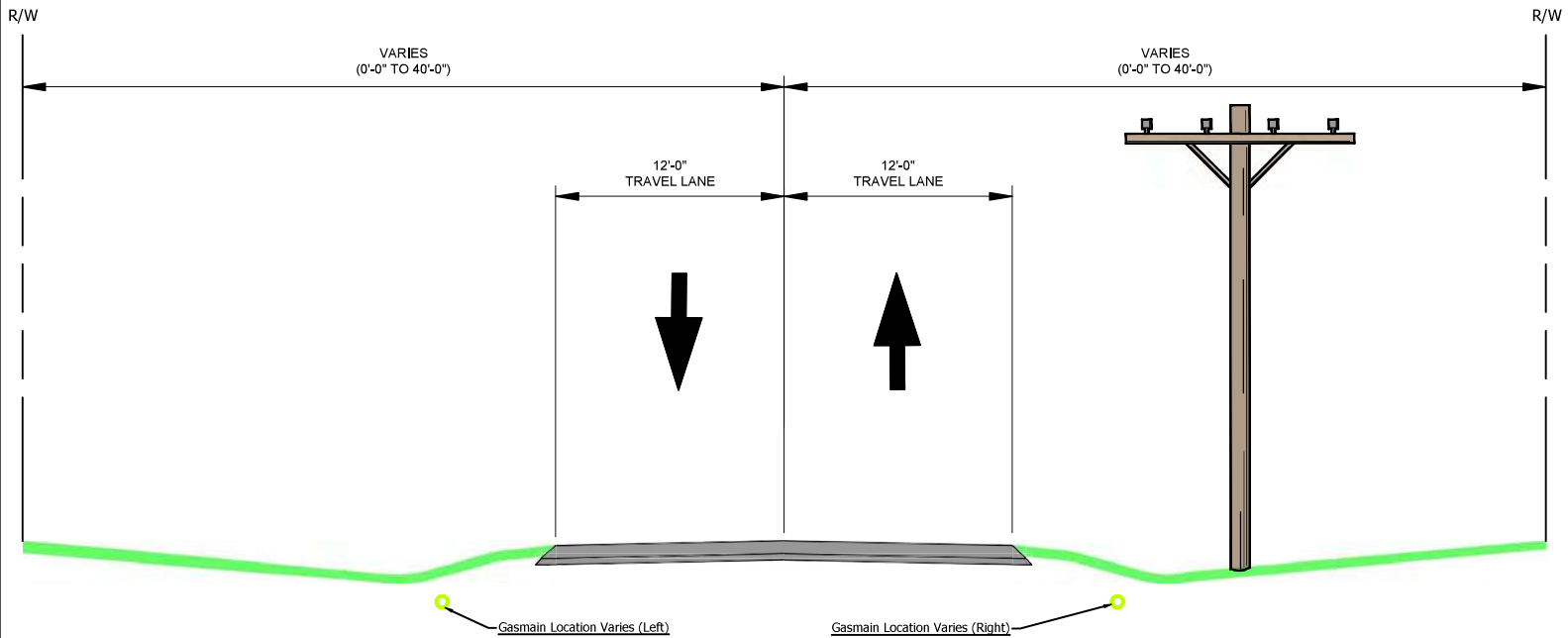
TYPICAL SECTION - SOLDIERS HOME ROAD
FROM SAGAMORE PARKWAY ACCESS RAMP TO HAMILTON STREET

Watermain Location Varies (Left)

Watermain Location Varies (Right)

Sanitary Sewer Location Varies (Left)

Sanitary Sewer Location Varies (Right)



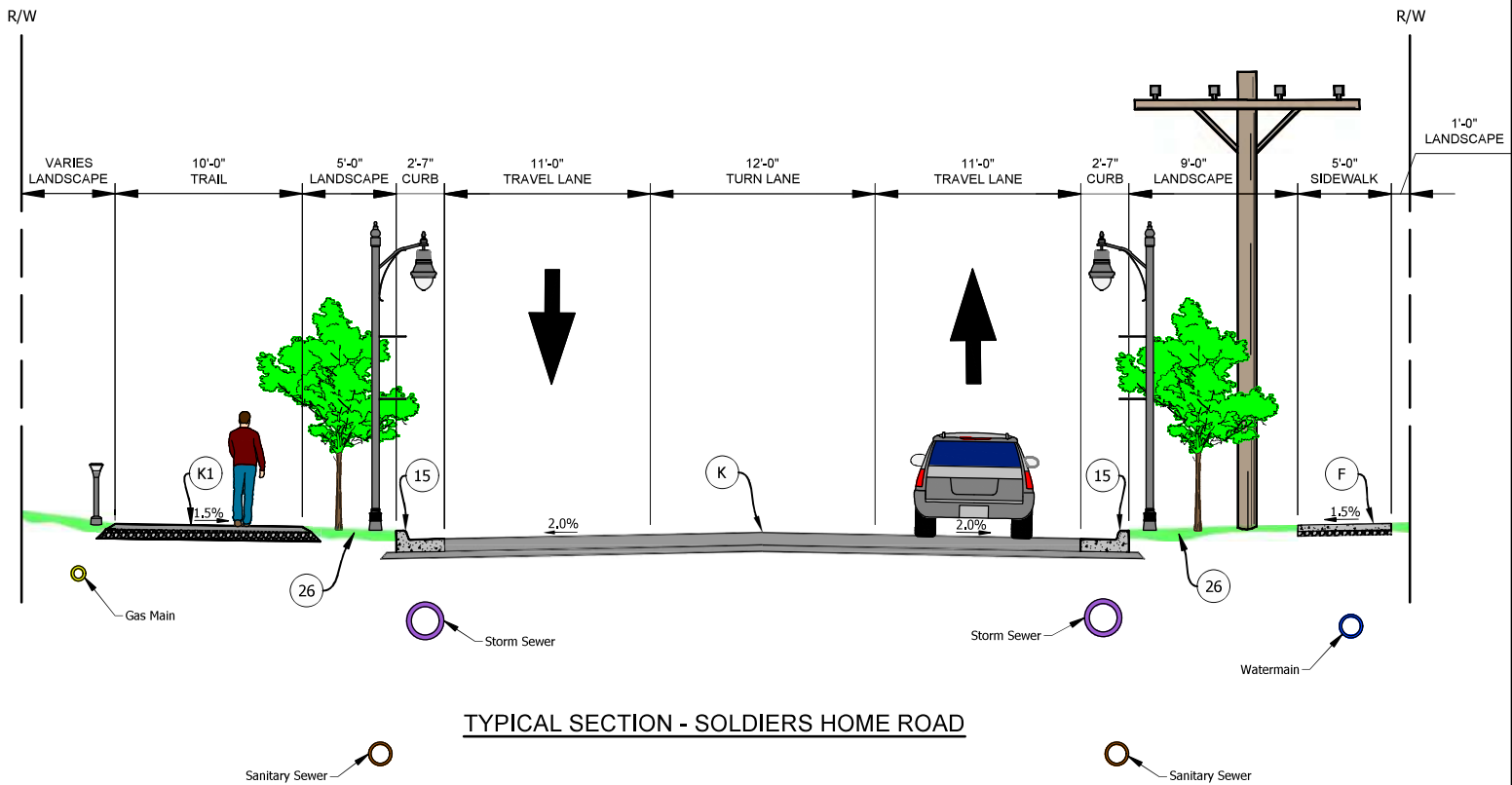
TYPICAL SECTION - SOLDIERS HOME ROAD
FROM HAMILTON STREET TO KALBERER ROAD

Sanitary Sewer Location Varies (Left)

Sanitary Sewer Location Varies (Right)

Watermain Location Varies (Right)

PROPOSED TYPICAL SECTION



TYPICAL SECTION - SOLDIERS HOME ROAD

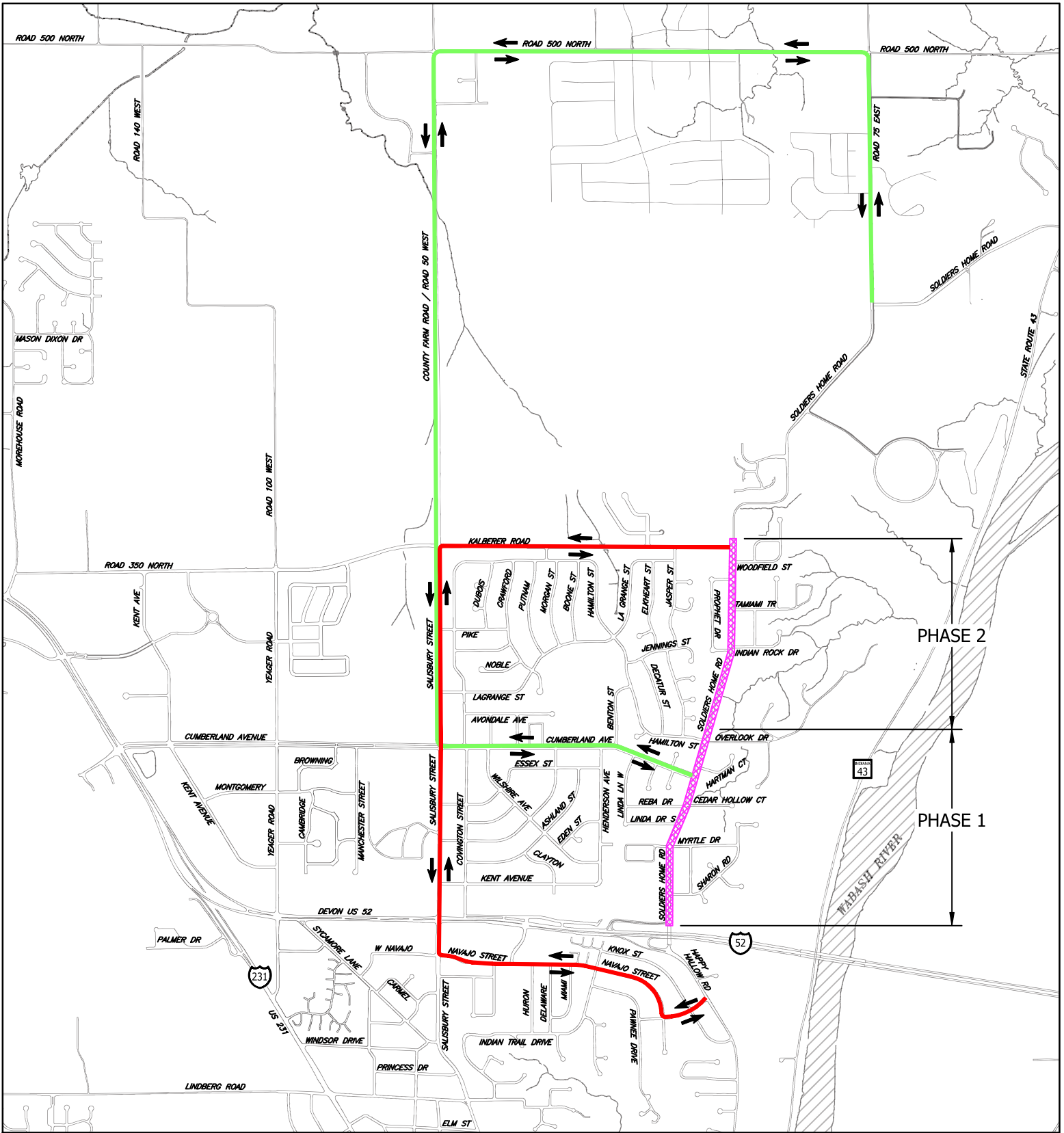
LEGEND

- (K) Asphalt Roadway
- (K1) Asphalt Trail
- (F) Concrete Sidewalk
- (15) Concrete Curb & Gutter
- (26) Sodding

NOTES:

Trail location changes from the west side of Soldiers Home Road to the East side north of Hamilton Street.

MAINTENANCE OF TRAFFIC



PHASE 2

PHASE 1

PHASE 1 DETOUR:
Navajo Street to
Salisbury Street to
Kalberer Road

PHASE 2 DETOUR:
Cumberland Avenue to
Salisbury Street
(County Farm Road) to
C.R. 500 North to
C.R. 75 East

LEGEND	
	Construction Area
	Traffic Flow Direction
	Phase 1 Detour Route
	Phase 2 Detour Route

Notes:
Access to driveways to be maintained at all times.

0 500' 1000' 2000'
SCALE 1" = 2000'

RESPONSES TO COMMENTS
FROM FIRST PUBLIC DESIGN INPUT SESSION, HELD APRIL 13, 2023
SOLDIERS HOME ROAD RECONSTRUCTION PROJECT

Public Comments with Responses:

- **COMMENT 1:** An attendee requested that a typical section of the existing roadway be provided in addition to the proposed typical section shown on the Fact Sheet.

RESPONSE: A typical section showing the existing roadway will be made available at the January 2024 public information meeting.

- **COMMENT 2:** An attendee asked about the proposed speed limits, noting that current speeds are high.

RESPONSE: As noted in the meeting, the proposed posted speed will not be increased from the existing 30 mph posted speed.

The following will help to inhibit higher speeds: 1) The travel lanes are to be reduced from the current 12 ft width to 11 ft (which is the minimum width according to standards for this roadway classification); 2) The center left turn lane width (12 ft) is minimized; 3) Curb and gutter are to be constructed; and, 4) A roundabout is to be built at the south end of the project.

Speed management countermeasures continue to be evaluated. Minimizing adverse impacts to response times along this emergency route is being considered in this evaluation.

- **COMMENT 3:** An attendee asked whether centerline pavement markings along the trail can be included in the project.

RESPONSE: Centerline pavement markings are not currently considered appropriate due to the type and frequency of use for this trail.

- **COMMENT 4:** Concerns were expressed regarding the ability to see oncoming trail users when residents exit their driveways.

RESPONSE: Bicycle sight distances have been evaluated; exhibits showing sight distance considerations have been prepared. The roadway design will seek to ensure that adequate sight distance is available to motorists and pedestrians in the vicinity of driveways. Existing shrubs and other landscaping remain considerations.

- **COMMENT 5:** Residents requested that project information be posted online.

RESPONSE: The City noted in the meeting that information for projects that are currently under construction is typically posted at www.wlmoves.com. The City plans to post information related to public input opportunities during the design phase, and to post detailed information during the construction phase.

- **COMMENT 6:** An attendee pointed out that broken water mains are a significant concern; these have been a regular occurrence.

RESPONSE: This concern is acknowledged. The project is expected to include a significant number of new, relocated water facilities.

- **COMMENT 7:** An attendee asked about the installation of a roundabout at Kalberer Road.

RESPONSE: Installation of a roundabout at this intersection was evaluated. Based on traffic counts and growth projections, the current and projected future level of service at this intersection is considered acceptable. Records indicate a relatively small number of crashes. For these reasons, construction of a roundabout here does not appear to be cost-effective. The funds are proposed to be allocated to construction of a roundabout at the Sagamore Parkway Ramps, where a greater benefit is expected.

- **COMMENT 8:** Residents adjacent to the semi-circular pavement area on the east side of Soldiers Home Road at Kalberer Road noted concerns about the current geometry; they would like to have the excess pavement removed.

RESPONSE: Following the evaluation of several driveway configuration options here, it is currently proposed that the geometry of this area be retained. The concrete pavement area is proposed to be reconstructed. The additional pavement here is useful for other purposes.

- **COMMENT 9:** An attendee asked why a 2-lane section with revised intersection control wasn't being presented.

RESPONSE: The addition of a center left turn (two-way between streets) is considered desirable due to the frequent driveways and streets along the project.

Based on traffic counts and growth projections, the levels of service at the Cumberland Avenue intersection and the Kalberer Road intersection are anticipated to be adequate for future conditions. For this reason, no changes to the configurations of these two intersections are considered warranted.

Traffic signals are not currently warranted for either of these two intersections, considering traffic volumes as well as pedestrian volumes. If future analysis shows that signalization is warranted, appropriate actions will be taken at that time.

A roundabout is proposed for the intersection with the Sagamore Parkway Ramps due to the substandard current and projected levels of service here.

- **COMMENT 10:** Questions were raised regarding the appropriate number of pedestrian crossings needed along the project for crossing Soldiers Home Road.

RESPONSE: Crossings are currently proposed at three intersections: Sagamore Parkway Ramps (north side of roundabout), Hamilton Street (north side), and Kalberer Road (north side). The City currently believes that these are sufficient to facilitate pedestrian movement.

- **COMMENT 11:** Concerns were expressed about the storm sewer outlets and potential erosion in the ravines.

RESPONSE: Concerns about potential erosion at the outfalls to the ravines are being addressed in the design. Energy-dissipating measures and other potential solutions are being explored.

- **COMMENT 12:** It was requested that bus stops and pull-offs be incorporated.

RESPONSE: The inclusion of bus turnouts is being considered. The selection of the locations and associated amenities will be coordinated with CityBus. In areas where turnouts are not provided, the center two-way left turn lane allows space for motorists to pass stopped city buses.

- **COMMENT 13:** The need for landings was noted for the proposed stairway connecting the project trail to the Sagamore Parkway Trail.

RESPONSE: Landings will be provided for this stairway to provide suitable intermittent rests. Landing intervals, landing dimensions, and all other elements of the stairway will be in accordance with ADA standards.

- **COMMENT 14:** A resident asked about limiting truck traffic.

RESPONSE: As also noted in the meeting, the roadway is not a truck route; this status will not change following the improvements. Through-truck traffic will not be permitted. Only those trucks serving owners along the route will be permitted.

- **COMMENT 15:** An attendee asked that research be done to determine the best and safest way to provide for interaction between bicycles, pedestrians, and motorists. The Indianapolis Cultural Trail - Cycle Track has all three separated. Kalberer Road has both bike lanes in the roadway and a trail. An attendee requested that a 12 ft wide trail (5 ft for pedestrians, 7 ft for bicyclists) be provided, with striping for bicyclists and pedestrians.

RESPONSE: Consideration continues to be given to this concern. The proposed design is believed to represent the most appropriate solution for this project. It allows for both bicyclist and pedestrian use of the trail, while also providing a separate sidewalk for pedestrians on the opposite side of the trail. Both the trail and sidewalk are to extend along the entire route. This arrangement is consistent with recently constructed facilities throughout similar neighborhoods in the city. Interaction with motorists is proposed to be addressed through the use of Rectangular Rapid Flashing Beacons (RRFB's) with appropriate signs and pavement markings at roadway crossings, and by maximizing sight distances.

- **COMMENT 16:** Some residents expressed concerns about no longer being able to park vehicles in their driveways due to the reduced driveway length resulting from the proposed road widening.

RESPONSE: This concern continues to be evaluated.

- **COMMENT 17:** A resident expressed concerns about backing out of the driveway due to the center two-way left turn lane.

RESPONSE: The center two-way left turn lane, while requiring additional distance to cross, is believed to provide a suitable refuge area for vehicles seeking to enter traffic

- **COMMENT 18:** It was requested that public education be provided regarding road crossings and multi-use trails.

RESPONSE: This concern continues to be evaluated.

- **COMMENT 19:** Attendees requested more and better public notification regarding public hearing dates and right-of-way acquisition.

RESPONSE: Notices for Public Design Input meetings will include notices on the City's website as well as notification of individual residents along the project route. The opportunity to request a formal Public Hearing prior to environmental approval in accordance with INDOT's Public Involvement Procedures will be advertised in the newspaper as a legal notice as well as on the City's website. Regarding right-of-way acquisition, the following document contains useful information related to acquisitions for federally-funded projects:

<https://www.in.gov/indot/projects/files/FHWA-Acquisition-Brochure-BLUE.pdf>

- **COMMENT 20:** Concerns were expressed about the volume of traffic in and out of the Montessori School, which was stated to be heavy three times a day.

RESPONSE: This concern continues to be evaluated.

- **COMMENT 21:** The Castle Ridge Planned Development HOA expressed concerns regarding drainage onto the property, ponding on Westview Circle, and potential impacts to its detention basin.

RESPONSE: The current plans include proposed lowering of the Westview Circle street approach so that runoff can exit Westview Drive and enter the new Soldiers Home Road storm drain system. The design of the project's drainage system will seek to avoid impacts to the development's drainage system, and will seek to accept the off-site flows.

- **COMMENT 22:** A resident on the east side of the roadway south of Myrtle Drive expressed concerns about reduced driveway length and loss of parking, and asked why the roadway cannot be shifted westward due to the lower density on the west side.

RESPONSE: Retaining the centerline of the roadway is desirable for achieving the best overall roadway alignment. The currently anticipated permanent right-of-way taking along the east side at this location is limited to approximately 5 feet.

- **COMMENT 23:** Residents on Linda Lane stated that motorists park along the curb immediately in advance of the stop sign, obstructing views. Painting the curb yellow to prohibit parking near the stop sign was requested.

RESPONSE: The City will consider limiting parking on Linda Lane near the intersection.

- **COMMENT 24:** Residents on Linda Lane stated also expressed concerns about motorists using Linda Lane and Reba Lane during construction as a cut-through to Cumberland Avenue.

RESPONSE: The City will be aware of this concern. Signing will be provided to encourage the use of the official detour routes. Public messaging will be considered. At the same time, options to prevent the use of these streets as cut-throughs are limited.

Susan Castle

Subject: FW: Roadway Changes Ahead: Share Your Voice

From: City of West Lafayette <westlafayette@public.govdelivery.com>

Sent: Sunday, August 10, 2025 9:31:29 AM

To: Clem Kuns <Clem@VSEngineering.com>

Subject: Roadway Changes Ahead: Share Your Voice

[View as a webpage](#) / [Share](#)



August 10, 2025



PUBLIC HEARING NOTICE

Soldiers Home Road and Sagamore Parkway Access Ramp Project

Dear West Lafayette Residents,

The City of West Lafayette strives to remain transparent and open with all residents, business owners, and stakeholders.

This digital letter serves as a second notice, following our initial communication sent on August 1, regarding an important upcoming public discussion. In alignment with our commitment to open communication and community involvement, community members are invited to participate in a discussion about proposed changes to Soldiers Home Road and the Sagamore Parkway access ramp.

Who Should Attend

The City of West Lafayette invites all residents, property owners, and interested community members to participate in the discussion about the planned changes to Soldiers Home Road and the Sagamore Parkway access ramp. This discussion will also include nearby roads.

What's Being Discussed

The public meeting will present **preliminary design plans** for the Soldiers Home Road and Sagamore Parkway Access Ramp Project. Planned improvements include:

- Widening sidewalks
- Constructing a new shared-use path
- Reconstructing driving lanes
- Upgrading drainage systems
- Improving lighting
- Adding ADA-accessible curb ramps

Community input is valued, and everyone is encouraged to take part in this important discussion about improvements that will benefit the entire community.

When

- **Date:** Tuesday, August 12, 2025
- **Doors Open:** 5:30 p.m.
- **Hearing Begins:** 6:00 p.m.

Where and How to Participate

- **Location:** Margerum City Hall: Council Chambers
222 N. Chauncey Avenue
West Lafayette, IN 47906
- **Livestream:** Available on the City's [website](#) for those who cannot attend in person.

Why This Matters

Soldiers Home Road currently experiences above-average traffic crashes, congestion, poor drainage, and limited pedestrian access. Project highlights include:

- A redesigned Soldiers Home Road with center turn lanes and safer intersections
- A new roundabout at Sagamore Parkway for smoother traffic flow
- A 10-foot-wide pedestrian and bike trail (west side) and sidewalk upgrades (east side)
- Improved drainage to reduce flooding and protect nearby homes
- ADA-accessible ramps, new lighting, and clearer signage

Additional Notes

This federally funded project will require the temporary closure of a section of Soldiers Home Road in phases, with a signed detour. Access to homes and businesses will be maintained throughout construction.

We're committed to keeping you informed and involved in decisions that impact our City. Your input is important as we work to make West Lafayette safer, more connected, and accessible for everyone.

Project updates: <https://wlmoves.com/projects/project-updates/soldiers-home-road-updates/>.

Submit comments: During the hearing or in writing to Michael Peterson at VS Engineering via email: MPeterson@vsengineering.com

Public hearing questions: Contact the City of West Lafayette Engineering Department at engineering@westlafayette.in.gov.

Thank you for your engagement and for helping to shape the future of our community.

Sincerely,
The City of West Lafayette Communications Team



Communications Department
222 N Chauncey Ave | West Lafayette, IN 47906 | 765.807.8990 | westlafayette.in.gov



SUBSCRIBER SERVICES:
[Manage Subscriptions](#) | [Help](#)

This email was sent to Clem@VSEngineering.com using govDelivery Communications Cloud on behalf of: City of West Lafayette · 222 N. Chauncey Ave · West Lafayette, IN 47906



Public Notices

Originally published at jconline.com on 07/25/2025

LEGAL NOTICE OF PUBLIC HEARING

Roadway Reconstruction Project

Soldiers Home Road and the Sagamore Parkway Access Ramp

West Lafayette, Tippecanoe County

Lead Des. No. 1401291 and 2201253

The City of West Lafayette will host a public hearing on August 12, 2025, in the Council Chambers of City Hall, 222 N Chauncey Avenue, West Lafayette, IN, 47906. The doors will open at 5:30 pm and the hearing will begin at 6:00 pm. A livestream of the hearing can be found at <https://www.westlafayette.in.gov/government/office-of-the-clerk/agendas-and-minutes-352>. The purpose of the public hearing is to offer all interested persons an opportunity to comment on the environmental document and preliminary design plans for the planned roadway reconstruction along Soldiers Home Road and the Sagamore Parkway access ramp. The purpose of the project is to reduce crashes due to the above average crash rate and less-than-desirable Level of Service (LOS) for the roadway and attain an LOS rating of at least a C. In addition, the project will address the noncontiguous segments of sidewalks, and lack of connectivity, and will improve drainage.

Specifically, the project is located approximately 160 ft. north of Sagamore Parkway in Sections 5 and 8; Township 23 North; Range 4 West in West Lafayette, Indiana. Soldiers Home Road and Sagamore Parkway access ramp are classified as an Urban Minor Arterial. The existing cross-section of Soldiers Home Road consists of one 12 ft. wide travel lane in each direction, with 3 ft. to 12 ft. wide paved shoulders, a 5 ft. wide sidewalk along the east side of the roadway and portions of the west side. Sagamore Parkway access ramp consists of 16 ft. travel lanes divided by guardrail followed by 6 ft. to 10 ft. wide shoulders. Land use in the vicinity of the project consists of single-family dwellings and multi-family apartment buildings. The speed limit on Soldiers Home Road is 30 miles per hour. Soldiers Home Road experiences high traffic congestion, significant vehicle crashes, poor drainage conditions and lack of pedestrian walkways.

Lead Des. No. 1401291 will begin north of the Sagamore Parkway access ramp and will end at Hamilton Street. This portion of the preferred alternative will include the following:

- Removal of 5 ft. wide sidewalks and construction of a 10 ft. wide pedestrian shared-use path along the west side of Soldiers Home Road with a 5 ft. wide landscaped buffer separating the pedestrian path from the roadway.
- Removal and replacement of 5 ft. wide sidewalks on the east side of Soldiers Home Road.
- Reconstruction of the roadway involving one 11 ft. wide travel lane in each direction and

one 12 ft. wide two-way left turn lane (TWLTL).

- Replacement of existing ditches and construction of new curb and gutter, storm drains and inlets along Soldiers Home Road and at the intersections of Sharon Road, Westview Circle / Myrtle Drive, Linda Lane, Reba Drive, Cedar Hollow Court, Cumberland Avenue, Overlook Drive / Hamilton Street.
- Installation of new streetlights at intersections along both sides of the roadway.
- Installation of bollard lights along the western pedestrian path.
- Installation of pavement markings and signage.
- Installation of Americans with Disabilities Act (ADA) compliant ramps.
- Incidental construction within this portion of the project area will include pavement tie-in and clearing trees along the east side of the roadway. Additionally, minor grading will be conducted on both sides of the roadway and at the existing ravine located on the east side of the roadway.
- Thirty-two existing maintenance pipes and inlets will be removed and fifty-two new maintenance pipes and inlets will be installed for drainage improvements along Soldiers Home Road beginning north of the Sagamore Parkway access ramp and ending approximately 800 ft. north of Hamilton Street. Additionally, one sanitary sewer line will be installed. Nine existing structures consisting of maintenance pipes and inlets will not be disturbed, ten manhole and inlet castings will be adjusted to grade and four sanitary manholes will be abandoned in place.

Des. No. 2201253 will include the intersection of Soldiers Home Road and the Sagamore Parkway access ramp. This portion of the preferred alternative will include the following:

- Construction of a 120 ft. diameter roundabout with 18 ft. wide circulating lanes bordered by concrete curb and gutter, storm drains, inlets and a 14 ft. wide concrete truck apron.
- Construction of a 10 ft. wide pedestrian shared-use path along the north and east sides of the roundabout with a 5 ft. wide landscaped buffer separating the pedestrian path from the roundabout.
- Construction of raised splitter islands, on each leg of the roundabout, between the entry and exit travel lanes.
- Installation of ADA compliant ramps.
- Installation of a concrete retaining wall.
- Installation of new streetlights between the travel lanes and pedestrian path.
- Installation of pavement markings and signage.
- Six existing maintenance pipes and inlets will be removed and seven new maintenance pipes and inlets will be installed for drainage improvements at the intersection of Soldiers Home Road and the Sagamore Parkway access ramp. Five existing structures consisting of manholes, catch basins and inlets will not be disturbed and one manhole casting will be adjusted to grade.

Project limits will extend approximately 0.70 mile along Soldiers Home Road and 0.08 mile along the Sagamore Parkway access ramp for a total of 0.78 mile.

The Maintenance of Traffic for the project will require the closure of Soldiers Home Road, to through-traffic, from Sagamore Parkway Ramp to north of Hamilton Street, in five phases, during construction. The detour will utilize Chippewa Street, Navajo Street, Salisbury Street, and Kalberer Road.

The proposed detour duration will be approximately one year. The detour length is approximately 2.2 miles and results in approximately 1.5 additional travel miles. Access to all parcels will be maintained for the duration of construction.

The City of West Lafayette will coordinate with emergency services, local school corporation officials and project stakeholders to ensure potential disruptions and impacts are minimized as much as possible.

The project requires approximately 1.45 acres of permanent Right-of-Way (ROW) consisting of 1.27 acres from residential, 0.13 acre from commercial and 0.05 acre from institutional land uses. The project also requires approximately 0.17 acre of temporary ROW consisting of 0.01 acre residential, 0.08 acre commercial and 0.08 acre institutional land uses. Approximately 0.38 acre will be re-acquired from residential land use and there will be work within approximately 0.18 acre of a residential easement.

Federal and local funds are proposed to be used for construction of this project. The estimated construction cost of the project is \$10,260,600. INDOT and the Federal Highway Administration have agreed that this project poses minimal impact to the natural environment. A Categorical Exclusion (CE) Level 2 environmental document has been prepared for the project. The environmental documentation and preliminary design information is available to view prior to the public hearing at the following locations:

1. Margerum City Hall, 222 N. Chauncey Avenue, West Lafayette, IN 47906
2. VS Engineering, 8 N. 3rd Street, Suite 302, Lafayette, IN 47901

A project webpage will be created prior to the public hearing to ensure project information is available on-line via the City of West Lafayette page <https://wlmoves.com/projects/project-updates/soldiers-home-road-updates/>.

Public statements for the record will be taken as part of the public hearing procedure. All verbal statements recorded during the public hearing and all written comments submitted prior to, during and for a period of two (2) weeks following the hearing date, will be evaluated, considered and addressed in subsequent environmental documentation.

Written comments may be submitted prior to the public hearing and within the comment period to: Michael Peterson, VS Engineering, at MPeterson@vsengineering.com or 8 N. 3rd Street, Suite 302, Lafayette, IN 47901. The City of West Lafayette respectfully requests that comments be submitted (postmarked) by August 26, 2025.

With advance notice, the City of West Lafayette will provide accommodations for persons with disabilities with regards to participation and access to project information as part of the hearings process including arranging auxiliary aids, interpretation services for the hearing impaired, services for the sight impaired and other services as needed. In addition, the City of West Lafayette will provide accommodations for persons of Limited English Proficiency (LEP) requiring auxiliary aids including language interpretation services and document conversion. Should accommodation be required please contact Natalia Bartos, City of West Lafayette, City Engineer, 765-807-8980 or nbartos@westlafayette.in.gov.

This notice is published in compliance with Code of Federal Regulations, Title 23, Section 771 (CFR 771.111(h)(1) states: "Each State must have procedures approved by the FHWA to carry out a public involvement/public hearing program." 23 CFR 450.212(a)(7) states: "Public involvement procedures shall provide for periodic review of the effectiveness of

the public involvement process to ensure that the process provides full and open access to all and revision of the process as necessary.” approved by the Federal Highway Administration, U.S. Department of Transportation on July 7, 2021.

LAF-July 25, August 1,2025- 11515513 HSPAXLP

AFFIDAVIT OF PUBLICATION

THE CITY OF WEST LAFAYETTE
City Of West Lafayette
222 N Chauncey AVE
West Lafayette IN 47906-3006

STATE OF WISCONSIN, COUNTY OF BROWN

The Journal and Courier, a newspaper printed and published in the city of Lafayette, Tippecanoe County, State of Indiana, and personal knowledge of the facts herein state and that the notice hereto annexed was Published in said newspapers in the issue:

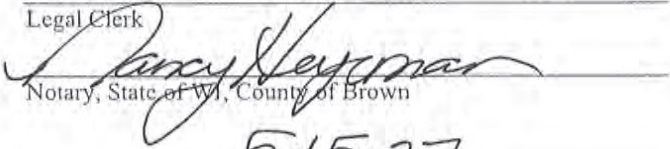
07/25/2025, 08/01/2025

and that the fees charged are legal.
Sworn to and subscribed before on 08/01/2025

RECEIVED
AUG 08 2025
CLERK



Legal Clerk



Notary, State of WI, County of Brown

5.15.27

My commission expires

Publication Cost:	\$277.68	
Tax Amount:	\$0.00	
Payment Cost:	\$277.68	
Order No:	11515513	# of Copies:
Customer No:	1333205	1
PO #:		

THIS IS NOT AN INVOICE!

Please do not use this form for payment remittance.

NANCY HEYRMAN
Notary Public
State of Wisconsin

To: LJC Laf Journal & Courier

(Government Unit)

County, Indiana

178 lines, 2.0000 columns wide which equals 356 equivalent lines at \$0.39 per line @ 2 days \$277.68

Acct #: 1333205

Ad #: 11515513

Website Publication \$0.00

DATA FOR COMPUTING COST

Charge for proof(s) of publication \$0.00

Width of single column 1.53 in

Number of insertions 2

TOTAL AMOUNT OF CLAIM \$277.68

Size of type 7 point

Claim No. _____ Warrant No. _____

IN FAVOR OF

I have examined the within claim and hereby certify as follows:

That it is in proper form.

That it is duly authenticated as required by law.

That it is based upon statutory authority.

That it is apparently (correct)

(incorrect)

\$ _____

On Account of Appropriation For

FED ID

83-2810977

Allowed _____, 20 _____

In the sum of \$ _____

I certify that the within claim is true and correct, that the services there-in itemized and for which charge is made were ordered by me and were necessary to the public business.

LEGAL NOTICE OF PUBLIC HEARING
Roadway Reconstruction Project
Soldiers Home Road and the Sagamore Parkway Access
Ramp

West Lafayette, Tippecanoe County

Lead Des. No. 1401291 and 2201253

The City of West Lafayette will host a public hearing on August 12, 2025, in the Council Chambers of City Hall, 222 N Chauncey Avenue, West Lafayette, IN, 47906. The doors will open at 5:30 pm and the hearing will begin at 6:00 pm. A livestream of the hearing can be found at <https://www.westlafayette.in.gov/government/office-of-the-clerk/agendas-and-minutes-352>. The purpose of the public hearing is to offer all interested persons an opportunity to comment on the environmental document and preliminary design plans for the planned roadway reconstruction along Soldiers Home Road and the Sagamore Parkway access ramp. The purpose of the project is to reduce crashes due to the above average crash rate and less-than-desirable Level of Service (LOS) for the roadway and attain an LOS rating of at least a C. In addition, the project will address the noncontiguous segments of sidewalks, and lack of connectivity, and will improve drainage.

Specifically, the project is located approximately 160 ft. north of Sagamore Parkway in Sections 5 and 8; Township 23 North; Range 4 West in West Lafayette, Indiana. Soldiers Home Road and Sagamore Parkway access ramp are classified as an Urban Minor Arterial. The existing cross-section of Soldiers Home Road consists of one 12 ft. wide travel lane in each direction, with 3 ft. to 12 ft. wide paved shoulders, a 5 ft. wide sidewalk along the east side of the roadway and portions of the west side. Sagamore Parkway access ramp consists of 16 ft. travel lanes divided by guardrail followed by 6 ft. to 10 ft. wide shoulders. Land use in the vicinity of the project consists of single-family dwellings and multi-family apartment buildings. The speed limit on Soldiers Home Road is 30 miles per hour. Soldiers Home Road experiences high traffic congestion, significant vehicle crashes, poor drainage conditions and lack of pedestrian walkways.

Lead Des. No. 1401291 will begin north of the Sagamore Parkway access ramp and will end at Hamilton Street. This portion of the preferred alternative will include the following:

- Removal of 5 ft. wide sidewalks and construction of a 10 ft. wide pedestrian shared-use path along the west side of Soldiers Home Road with a 5 ft. wide landscaped buffer separating the pedestrian path from the roadway.
- Removal and replacement of 5 ft. wide sidewalks on the east side of Soldiers Home Road.
- Reconstruction of the roadway involving one 11 ft. wide travel lane in each direction and one 12 ft. wide two-way left turn lane (TWLTL).
- Replacement of existing ditches and construction of new curb and gutter, storm drains and inlets along Soldiers Home Road and at the intersections of Sharon Road, Westview Circle / Myrtle Drive, Linda Lane, Reba Drive, Cedar Hollow Court, Cumberland Avenue, Overlook Drive / Hamilton Street.
- Installation of new streetlights at intersections along both sides of the roadway.
- Installation of bollard lights along the western pedestrian path.
- Installation of pavement markings and signage.
- Installation of Americans with Disabilities Act (ADA) compliant ramps.
- Incidental construction within this portion of the project area will include pavement tie-in and clearing trees along the east side of the roadway. Additionally, minor grading will be conducted on both sides of the roadway and at the existing ravine located on the east side of the roadway.
- Thirty-two existing maintenance pipes and inlets will be removed and fifty-two new maintenance pipes and inlets will be installed for drainage improvements along Soldiers Home Road beginning north of the Sagamore Parkway access ramp and ending approximately 800 ft. north of Hamilton Street. Additionally, one sanitary sewer line will be installed. Nine existing structures consisting of maintenance pipes and inlets will not be disturbed, ten manhole and inlet castings will be adjusted to grade and four sanitary manholes will be abandoned in place.

Des. No. 2201253 will include the intersection of Soldiers Home Road and the Sagamore Parkway access ramp. This portion of the preferred alternative will include the following:

- Construction of a 120 ft. diameter roundabout with 18 ft. wide circulating lanes bordered by concrete curb and gutter, storm drains, inlets and a 14 ft. wide concrete truck apron.
- Construction of a 10 ft. wide pedestrian shared-use path along the north and east sides of the roundabout with a 5 ft. wide landscaped buffer separating the pedestrian path from the roundabout.
- Construction of raised splitter islands, on each leg of the roundabout, between the entry and exit travel lanes.
- Installation of ADA compliant ramps.
- Installation of a concrete retaining wall.
- Installation of new streetlights between the travel lanes and pedestrian path.
- Installation of pavement markings and signage.
- Six existing maintenance pipes and inlets will be removed and seven new maintenance pipes and inlets will be installed for drainage improvements at the intersection of Soldiers Home Road and the Sagamore Parkway access ramp. Five existing structures consisting of manholes, catch basins and inlets will not be disturbed and one manhole casting will be adjusted to grade.

Project limits will extend approximately 0.70 mile along Soldiers Home Road and 0.08 mile along the Sagamore Parkway access ramp for a total of 0.78 mile.

The Maintenance of Traffic for the project will require the closure of Soldiers Home Road, to through-traffic, from Sagamore Parkway Ramp to north of Hamilton Street, in five phases, during construction. The detour will utilize Chippewa Street, Navajo Street, Salisbury Street, and Kalberer Road.

The proposed detour duration will be approximately one year. The detour length is approximately 2.2 miles and results in approximately 1.5 additional travel miles. Access to all parcels will be maintained for the duration of construction.

The City of West Lafayette will coordinate with emergency services, local school corporation officials and project stakeholders to ensure potential disruptions and impacts are minimized as much as possible.

The project requires approximately 1.45 acres of permanent Right-of-Way (ROW) consisting of 1.27 acres from residential, 0.13 acre from commercial and 0.05 acre from institutional land uses. The project also requires approximately 0.17 acre of temporary ROW consisting of 0.01 acre residential, 0.08 acre commercial and 0.08 acre institutional land uses. Approximately 0.38 acre will be re-acquired from residential land use and there will be work within approximately 0.18 acre of a residential easement.

Federal and local funds are proposed to be used for construction of this project. The estimated construction cost of the project is \$10,260,600. INDOT and the Federal Highway Administration have agreed that this project poses minimal impact to the natural environment. A Categorical Exclusion (CE) Level 2 environmental document has been prepared for the project. The environmental documentation and preliminary design information is available to view prior to the public hearing at the following locations:

1. Margerum City Hall, 222 N. Chauncey Avenue, West Lafayette, IN 47906
2. VS Engineering, 8 N. 3rd Street, Suite 302, Lafayette, IN 47901

A project webpage will be created prior to the public hearing to ensure project information is available on-line via the City of West Lafayette page <https://wlmoves.com/projects/project-updates/soldiers-home-road-updates/>.

Public statements for the record will be taken as part of the public hearing procedure. All verbal statements recorded during the public hearing and all written comments submitted prior to, during and for a period of two (2) weeks following the hearing date, will be evaluated, considered and addressed in subsequent environmental documentation. Written comments may be submitted prior to the public hearing and within the comment period to: Michael Peterson, VS Engineering, at MPeterson@vsengineering.com or 8 N. 3rd Street, Suite 302, Lafayette, IN 47901. **The City of West Lafayette respectfully requests that comments be submitted (postmarked) by August 26, 2025.**

With advance notice, the City of West Lafayette will provide accommodations for persons with disabilities with regards to participation and access to project information as part of the hearings process including arranging auxiliary aids, interpretation services for the hearing impaired, services for the sight impaired and other services as needed. In addition, the City of West Lafayette will provide accommodations for persons of Limited English Proficiency (LEP) requiring auxiliary aids including language interpretation services and document conversion. Should accommodation be required please contact Natalia Bartos, City of West Lafayette, City Engineer, 765-807-8980 or nbartos@westlafayette.in.gov.

This notice is published in compliance with Code of Federal Regulations, Title 23, Section 771 (CFR 771.111(h)(1) states: "Each State must have procedures approved by the FHWA to carry out a public involvement/public hearing program." 23 CFR 450.212(a)(7) states: "Public involvement procedures shall provide for periodic review of the effectiveness of the public involvement process to ensure that the process provides full and open access to all and revision of the process as necessary." approved by the Federal Highway Administration, U.S. Department of Transportation on July 7, 2021. LAF-July 25, August 1, 2025- 11515513 HSPAXLP

Susan Castle

Subject: FW: Des. No. 1401291 Soldiers Home Road and Sagamore Parkway Ramps, Road Reconstruction, W. Lafayette, Indiana
Attachments: Lead Des. No. 1401291 Legal Notice.pdf

From: Susan Castle
Sent: Friday, July 25, 2025 1:03 PM
To: Golladay, Destiny <dgolladay@indot.in.gov>; Ervin, Brock <bervin@indot.in.gov>; erica.tait@dot.gov; paige.story@dot.gov; Christie Stanifer (environmentalreview@dnr.in.gov) <environmentalreview@dnr.in.gov>; melanie.h.castillo@hud.gov; MWRO Compliance, NPS <mwro_compliance@nps.gov>; McWilliams, Robin <robin_mcwilliams@fws.gov>; Lamb, Patrick A <plamb@indot.in.gov>; Allen, John - FPAC-NRCS, IN <john.allen@usda.gov>; dpoad@tippecanoe.in.gov; streets@westlafayette.in.gov; engineering@westlafayette.in.gov; kparker@westlafayette.in.gov; lleverenz@westlafayette.in.gov; chouston@westlafayette.in.gov; wlprboard@westlafayette.in.gov; caldwelld@wl.k12.in.us; nbartos@wl.in.gov; Danielle Houston <dhouston@westlafayette.in.gov>
Cc: Mike Peterson <mpeterson@vsengineering.com>
Subject: Des. No. 1401291 Soldiers Home Road and Sagamore Parkway Ramps, Road Reconstruction, W. Lafayette, Indiana

Good Afternoon Interested Agencies,

The City of West Lafayette will host a public hearing on August 12, 2025, in the Council Chambers of City Hall, 222 N Chauncey Avenue, West Lafayette, IN, 47906. The doors will open at 5:30 pm and the hearing will begin at 6:00 pm. Please see the attached legal notice for project information and where the released CE Level 2 and preliminary design plans can be viewed.

Thank you very much



Susan Castle
Senior Project Manager
NEPA Compliance

O 317.608.2730
M 317.379.3649

6958 Hillsdale Court
Indianapolis, IN 46250
www.metricenv.com

Certified DBE/MBE/SBE Company
Indiana | Kentucky | Ohio | West Virginia | Pennsylvania

Public Design Input Session Sign-in Sheet
Soldiers Home Road Reconstruction, April 13, 2023

Name	Address	Phone	E-mail
Joseph and Janet & Ben			

Lorena Dulbe			
Nicole Klinkner			
Tom & Jan Robertson			
Barbara Gotham			
Marcia Strigin			
Shane Stigson			
Rod & Gretchen Bertelot			
Curt Wehner			
Wyatt Hooker			
Myron Miller			
Brian Metzger			
JASON ANDERSON			
Linda Lee			

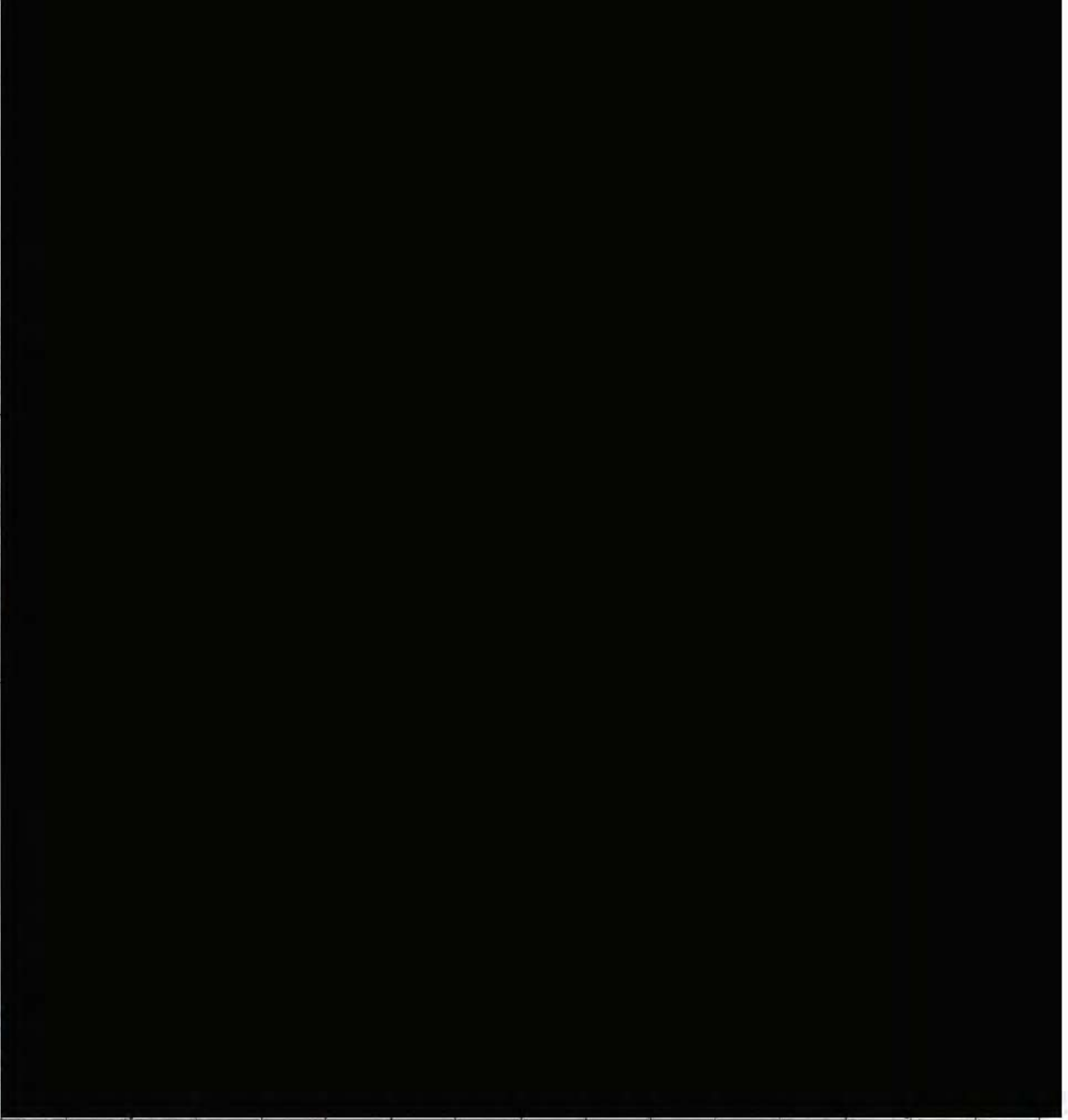
Public Design Input Session Sign-in Sheet
Soldiers Home Road Reconstruction, April 13, 2023

Name	Address	Phone	E-mail
Randy Strasser - V5			
Vim Strong			
Stu KLINE			
Pat Smith			
Teresa + Kevin Heese			
Andrea Gray			
Esmatullah Shardaad			
Charles Saif			
Keshy Waters			
Seencer Cowdell			
AED WISCHER			
Linda DeBoy			
John Meluch			
Connie Hahn			
KELLESSEMAN			
Amber Martin			

Jessica Ryan DeBorch
Jan Scarcella
PAUL WITTEN
Tim & Karen Pourpoint
Kathy Boschen
Naderdd Pimuroy/Doug Ashm
Carrie Fedigo
Gingqi Ni
Catherine Malady
Nadia Bechler
Ramona Kuhns
Dave McKinnis
Cathy "
Daniel & Trina Pierce
Inis O'Donnell Bellisario
Jeremy Foote
JOHN SCHUMANN
Karen Arkelson

Legal Notice of Public Hearing mailed or e-mailed to the below individuals that attended the first design in-put meeting

Public Design Input Session Sign-in Sheet
Soldiers Home Road Reconstruction, April 13, 2023

Name	Address	Phone	E-mail
Sandy Shoemaker			
Doni Jensen			
John Moore			
Sally Crow			
PAT LAVIN			
Dana Janiak-Couture			
Frank Lukes			
James Henrich			
Sandra Young			
Diana Relf			
Derval Dickson			
Les White			
Sandra Kelly			
SEAN SASSEN			
Gerard Maslovec			
WANDA MANSY			

Legal Notice of Public Hearing mailed or e-mailed to the below individuals that attended the first design in-put meeting

Public Design Input Session Sign-in Sheet
Soldiers Home Road Reconstruction, April 13, 2023

Name	Address	Phone	E-mail
Sheila Hooker			
Kimato P-je			
Carol Cox			
John Cox			
Chip Goldsberry			
JAY BRANAMAN			
Duane D. Donlap			
Ann Piechota			
Jessica Hinman			
Mary Campbell			
Rodney Noel			
Joel La Fleur			
CHARLES GICK			
Shelly Lange			
eta A			
Amy Pookay			

Legal Notice of Public Hearing mailed or mailed to the below individuals that attended the second design in-put meeting

Second Public Design Input Session Sign-in Sheet
Soldiers Home Road Reconstruction, January 18, 2024

Name	Address	Phone	E-mail
Mike Silver			
Amyette & Fave Smith			
JOE VANDERBILT			
Linda Young			
Chip Goldsberry			
Penny Carey			
Barbara Dey Gotham			
Jonathan Rustad			
JAY BRANAMAN			
JIM KIMURA			
ERIC FISHER			
Teresa Luse			
John Moore			
Carl Krieger			
Anorah Krieger			
Marissa Woolwine			

Legal Notice of Public Hearing mailed or e-mailed to the below individuals that attended the second design in-put meeting

Name	Address	Phone	E-mail
Marcia Strigin	[REDACTED]	[REDACTED]	[REDACTED]
Adela Longe	[REDACTED]	[REDACTED]	[REDACTED]
Donna H. Longe	[REDACTED]	[REDACTED]	[REDACTED]
TELESIEDA	[REDACTED]	[REDACTED]	[REDACTED]
Hannah Martin	[REDACTED]	[REDACTED]	[REDACTED]
Shelly Lange	[REDACTED]	[REDACTED]	[REDACTED]
Diana Reif	[REDACTED]	[REDACTED]	[REDACTED]
Carol Davidson	[REDACTED]	[REDACTED]	[REDACTED]
CLIFTON IVY	[REDACTED]	[REDACTED]	[REDACTED]
Mary & Dwight McKay	[REDACTED]	[REDACTED]	[REDACTED]
APRIL TEEL	[REDACTED]	[REDACTED]	[REDACTED]
Monfessorri School of Greater Lafayette	[REDACTED]	[REDACTED]	[REDACTED]

* _____

Second Public Design Input Session Sign-in Sheet
Soldiers Home Road Reconstruction, January 18, 2024

Name	Address	Phone	E-mail
Ann Preebota			
Dwight [unclear]			
April Delaney			
Pat Sudy Darwin			
Sheila Hooker			
Tamara xxxxxx Ruzozi			
Michiko Ruzozi Ruzozi			
Ashley Kilbury			
James Smith			
DEEUS OSETO			
Alexandra Jordanov			
Faheel Unisser and Jake Pittso			
LINDA FEIFFER			
Ben + Amanda Manning			
Sandra Kelly Sasser + Sean Sasser			
John Moynihan			

Legal Notice of Public Hearing mailed or e-mailed to the below individuals that attended the second design in-put meeting

Name	Address	Phone	E-mail
Kevin Luse	[REDACTED]	[REDACTED]	[REDACTED]
KEVIN MURRELL MUMFORD	[REDACTED]	[REDACTED]	[REDACTED]
Catherine + Nancy Malad	[REDACTED]	[REDACTED]	[REDACTED]
Yinzhon Yao	[REDACTED]	[REDACTED]	[REDACTED]
Doug Poole	[REDACTED]	[REDACTED]	[REDACTED]
Stu Keune	[REDACTED]	[REDACTED]	[REDACTED]
Gerry Murray	[REDACTED]	[REDACTED]	[REDACTED]
Linda DeBoy	[REDACTED]	[REDACTED]	[REDACTED]
Megan Federer	[REDACTED]	[REDACTED]	[REDACTED]
Genevieve Wang	[REDACTED]	[REDACTED]	[REDACTED]
Brian Metzger	[REDACTED]	[REDACTED]	[REDACTED]
Tanya Finkbine	[REDACTED]	[REDACTED]	[REDACTED]
ABRAHAM MORRIS	[REDACTED]	[REDACTED]	[REDACTED]
CHARLES GICK	[REDACTED]	[REDACTED]	[REDACTED]
Montessori School of Cortez	[REDACTED]	[REDACTED]	[REDACTED]
[REDACTED]	[REDACTED]	[REDACTED]	[REDACTED]
[REDACTED]	[REDACTED]	[REDACTED]	[REDACTED]

Legal Notice of Public Hearing mailed or e-mailed to the below individuals that attended the second design in-put meeting

Second Public Design Input Session Sign-in Sheet
Soldiers Home Road Reconstruction, January 18, 2024

Name	Address	Phone	E-mail
Kenneth Pugh	[Redacted]	[Redacted]	[Redacted]
Laurie Pugh			
Marguerite Kubly			



August 12, 2025

Welcome to the City of West Lafayette's Public Hearing for the proposed roadway reconstruction project on Soldiers Home Road and Sagamore Parkway Access Ramp, approximately 160 feet north of Sagamore Parkway to Hamilton Street.

Lead Des. No. 1401291 and 2201253
Roadway Reconstruction Project
Soldiers Home Road and Sagamore Parkway Access Ramp
City of West Lafayette, Tippecanoe County, Indiana

The purpose of this public hearing is to offer all interested persons an opportunity to hear about the proposed project and comment on the current design plans and the environmental document.

Public Hearing Agenda

- 5:30: Doors Open
- 5:30 to 6:00: Project Display Viewing
- 6:00: Presentation Begins
 - Public Comments
 - Project Display Viewing
- 8:00: Doors Close

There are several ways your comments may be presented this evening and following tonight's public hearing. You may submit comments in the following manner:

1. **Complete a written comment form** at the public hearing and return it at the registration table. Comment forms are available at the registration table and on the City of West Lafayette page <https://wlmoves.com/project/soldiers-home-road-reconstruction/> Forms are also included in the information packet.
2. **Provide verbal comments** during the public comment session at tonight's hearing presentation.
3. **E-mail** comments to:
Mr. Michael Peterson at MPeterson@vsengineering.com
4. **Mail** comments to:
Mr. Michael Peterson at VS Engineering 8 N. 3rd Street, Suite 302, Lafayette, IN 47901.
5. **Submit comments** (or have comments postmarked) by **August 26, 2025**. All comments received will be equally evaluated and considered as part of the City of West Lafayette's decision making process.
6. **Questions?** Contact the City of West Lafayette, Danielle Houston at dhouston@westlafayette.in.gov or (765) 807-8980.

All comments received prior to, during and following the public hearing will be evaluated and responded to in writing within subsequent project documentation. The documentation will address any concerns presented during the public hearing process and describe project decisions reached following careful consideration of the views and concerns of the public.

The project team will be available in the display area to explain project details and address questions prior to and following the public hearing.

The draft design plans and draft environmental document are available for public review and inspection at the following locations:

- Mangerum City Hall, 222 N. Chauncey Avenue, West Lafayette, IN 47906
- VS Engineering, 8 N. 3rd Street, Suite 302, Lafayette, IN 47901
- City of West Lafayette at <https://wlmoves.com/project/soldiers-home-road-reconstruction/>

LEGAL NOTICE OF PUBLIC HEARING
Roadway Reconstruction Project
Soldiers Home Road and the Sagamore Parkway Access Ramp
West Lafayette, Tippecanoe County
Lead Des. No. 1401291 and 2201253

The City of West Lafayette will host a public hearing on August 12, 2025, in the Council Chambers of City Hall, 222 N Chauncey Avenue, West Lafayette, IN, 47906. The doors will open at 5:30 pm and the hearing will begin at 6:00 pm. A livestream of the hearing can be found at <https://www.westlafayette.in.gov/government/office-of-the-clerk/agendas-and-minutes-352>. The

purpose of the public hearing is to offer all interested persons an opportunity to comment on the environmental document and preliminary design plans for the planned roadway reconstruction along Soldiers Home Road and the Sagamore Parkway access ramp. The purpose of the project is to reduce crashes due to the above average crash rate and less-than-desirable Level of Service (LOS) for the roadway and attain an LOS rating of at least a C. In addition, the project will address the noncontiguous segments of sidewalks, and lack of connectivity, and will improve drainage.

Specifically, the project is located approximately 160 ft. north of Sagamore Parkway in Sections 5 and 8; Township 23 North; Range 4 West in West Lafayette, Indiana. Soldiers Home Road and Sagamore Parkway access ramp are classified as an Urban Minor Arterial. The existing cross-section of Soldiers Home Road consists of one 12 ft. wide travel lane in each direction, with 3 ft. to 12 ft. wide paved shoulders, a 5 ft. wide sidewalk along the east side of the roadway and portions of the west side. Sagamore Parkway access ramp consists of 16 ft. travel lanes divided by guardrail followed by 6 ft. to 10 ft. wide shoulders. Land use in the vicinity of the project consists of single-family dwellings and multi-family apartment buildings. The speed limit on Soldiers Home Road is 30 miles per hour. Soldiers Home Road experiences high traffic congestion, significant vehicle crashes, poor drainage conditions and lack of pedestrian walkways.

Lead Des. No. 1401291 will begin north of the Sagamore Parkway access ramp and will end at Hamilton Street. This portion of the preferred alternative will include the following:

- Removal of 5 ft. wide sidewalks and construction of a 10 ft. wide pedestrian shared-use path along the west side of Soldiers Home Road with a 5 ft. wide landscaped buffer separating the pedestrian path from the roadway.
- Removal and replacement of 5 ft. wide sidewalks on the east side of Soldiers Home Road.
- Reconstruction of the roadway involving one 11 ft. wide travel lane in each direction and one 12 ft. wide two-way left turn lane (TWLTL).
- Replacement of existing ditches and construction of new curb and gutter, storm drains and inlets along Soldiers Home Road and at the intersections of Sharon Road, Westview Circle / Myrtle Drive, Linda Lane, Reba Drive, Cedar Hollow Court, Cumberland Avenue, Overlook Drive / Hamilton Street.
- Installation of new streetlights at intersections along both sides of the roadway.
- Installation of bollard lights along the western pedestrian path.
- Installation of pavement markings and signage.
- Installation of Americans with Disabilities Act (ADA) compliant ramps.
- Incidental construction within this portion of the project area will include pavement tie-in and clearing trees along the east side of the roadway. Additionally, minor grading will be conducted on both sides of the roadway and at the existing ravine located on the east side of the roadway.
- Thirty-two existing maintenance pipes and inlets will be removed and fifty-two new maintenance pipes and inlets will be installed for drainage improvements along Soldiers Home Road beginning north of the Sagamore Parkway access ramp and ending approximately 800 ft. north of Hamilton Street. Additionally, one sanitary sewer line will be installed. Nine existing structures consisting of

maintenance pipes and inlets will not be disturbed, ten manhole and inlet castings will be adjusted to grade and four sanitary manholes will be abandoned in place.

Des. No. 2201253 will include the intersection of Soldiers Home Road and the Sagamore Parkway access ramp. This portion of the preferred alternative will include the following:

- Construction of a 120 ft. diameter roundabout with 18 ft. wide circulating lanes bordered by concrete curb and gutter, storm drains, inlets and a 14 ft. wide concrete truck apron.
 - Construction of a 10 ft. wide pedestrian shared-use path along the north and east sides of the roundabout with a 5 ft. wide landscaped buffer separating the pedestrian path from the roundabout.
 - Construction of raised splitter islands, on each leg of the roundabout, between the entry and exit travel lanes.
- Installation of ADA compliant ramps.
 - Installation of a concrete retaining wall.
 - Installation of new streetlights between the travel lanes and pedestrian path.
 - Installation of pavement markings and signage.
 - Six existing maintenance pipes and inlets will be removed and seven new maintenance pipes and inlets will be installed for drainage improvements at the intersection of Soldiers Home Road and the Sagamore Parkway access ramp. Five existing structures consisting of manholes, catch basins and inlets will not be disturbed and one manhole casting will be adjusted to grade.

Project limits will extend approximately 0.70 mile along Soldiers Home Road and 0.08 mile along the Sagamore Parkway access ramp for a total of 0.78 mile.

The Maintenance of Traffic for the project will require the closure of Soldiers Home Road, to through-traffic, from Sagamore Parkway Ramp to north of Hamilton Steet, in five phases, during construction. The detour will utilize Chippewa Street, Navajo Street, Salisbury Street, and Kalberer Road.

The proposed detour duration will be approximately one year. The detour length is approximately 2.2 miles and results in approximately 1.5 additional travel miles. Access to all parcels will be maintained for the duration of construction.

The City of West Lafayette will coordinate with emergency services, local school corporation officials and project stakeholders to ensure potential disruptions and impacts are minimized as much as possible.

The project requires approximately 1.45 acres of permanent Right-of-Way (ROW) consisting of 1.27 acres from residential, 0.13 acre from commercial and 0.05 acre from institutional land uses. The project also requires approximately 0.17 acre of temporary ROW consisting of 0.01 acre residential, 0.08 acre commercial and 0.08 acre institutional land uses. Approximately 0.38 acre will be re-acquired from residential land use and there will be work within approximately 0.18 acre of a residential easement.

Federal and local funds are proposed to be used for construction of this project. The estimated construction cost of the project is \$10,260,600. INDOT and the Federal Highway Administration have agreed that this project poses minimal impact to the natural environment. A Categorical Exclusion (CE) Level 2 environmental document has been prepared for the project. The environmental documentation and preliminary design information is available to view prior to the public hearing at the following locations:

1. Margerum City Hall, 222 N. Chauncey Avenue, West Lafayette, IN 47906
2. VS Engineering, 8 N. 3rd Street, Suite 302, Lafayette, IN 47901

A project webpage will be created prior to the public hearing to ensure project information is available on-line via the City of West Lafayette page <https://wlmoves.com/projects/project-updates/soldiers-home-road-updates/>.

Public statements for the record will be taken as part of the public hearing procedure. All verbal statements recorded during the public hearing and all written comments submitted prior to, during and for a period of two (2) weeks following the hearing date, will be evaluated, considered and addressed in subsequent environmental documentation. Written comments may be submitted prior to the public hearing and within the comment period to: Michael Peterson, VS Engineering, at MPeterson@vsengineering.com or 8 N. 3rd Street, Suite 302, Lafayette, IN 47901. **The City of West Lafayette respectfully requests that comments be submitted (postmarked) by August 26, 2025.**

With advance notice, the City of West Lafayette will provide accommodations for persons with disabilities with regards to participation and access to project information as part of the hearings process including arranging auxiliary aids, interpretation services for the hearing impaired, services for the sight impaired and other services as needed. In addition, the City of West Lafayette will provide accommodations for persons of Limited English Proficiency (LEP) requiring auxiliary aids including language interpretation services and document conversion. Should accommodation be required please contact Natalia Bartos, City of West Lafayette, City Engineer, 765-807-8980 or nbartos@westlafayette.in.gov.

This notice is published in compliance with Code of Federal Regulations, Title 23, Section 771 (CFR 771.111(h)(1) states: "Each State must have procedures approved by the FHWA to carry out a public involvement/public hearing program." 23 CFR 450.212(a)(7) states: "Public involvement procedures shall provide for periodic review of the effectiveness of the public involvement process to ensure that the process provides full and open access to all and revision of the process as necessary." approved by the Federal Highway Administration, U.S. Department of Transportation on July 7, 2021.

PUBLIC HEARING SIGN-IN SHEET
 Soldiers Home Road and Sagamore Parkway Access Ramp
 West Lafayette, Tippecanoe County, Indiana
 Lead Des. No. 1401291 and 2201253
 Tuesday, August 12, 2025

Please Note: Your name and e-mail address will be redacted prior to attaching this sign-in sheet to the Environmental Document. Please place a check mark in the appropriate column at right if you wish to receive project updates by Mail or E-mail.

NAME (PLEASE PRINT)	ORGANIZATION (if Applicable)	ADDRESS	E-MAIL ADDRESS	Non-Public Officials Check to speak	Public Officials Check to Speak	Prefer U.S. Mail	Prefer E-mail
Morgan Heimes	West Laf. Apt Group			✓	✓		✓
Clay Colson	West Laf Apt Group			✓	✓		✓
Jan Scarcelli							
Carol Kuebler							
Don COLLIER				✓			✓
Rick Morrissey							✓
Howell Li				✓			✓
Dorothy Taylor							✓
David Taylor							✓
Marcie Strigin							✓
Liane Strigin							✓
Jan Applegate							✓
Ty Hahn							✓
Connie Hahn							✓
JOHN BURNT				✓			✓
TERESA SMITH							✓
Sim'd Jaja Henderson				✓			✓
MARC + CHARLE COHEN							✓
Debra Ellis	Self			✓			✓
Jennifer Brand							✓

PUBLIC HEARING SIGN-IN SHEET
 Soldiers Home Road and Sagamore Parkway Access Ramp
 West Lafayette, Tippecanoe County, Indiana
 Lead Des. No. 1401291 and 2201253
 Tuesday, August 12, 2025

Please Note: Your name and e-mail address will be redacted prior to attaching this sign-in sheet to the Environmental Document. Please place a check mark in the appropriate column at right if you wish to receive project updates by Mail or E-mail.

NAME (PLEASE PRINT)	ORGANIZATION (If Applicable)	ADDRESS	E-MAIL ADDRESS	Non-Public Officials Check to speak	Public Officials Check to Speak	Prefer U.S. Mail	Prefer E-mail
SEAN SASSER	SELF			X			
Shao Cheng	Self			✓			✓
Aaron Veech	SLP						.
Andrea Burniske	Self			COM			L
Ut Hynd	Self						
Kristen Patton	Self			COM ✓			✓
Andrew Patten	Self			CF ✓			✓
DIK SYKESKE	SELF			PM			✓
Dennis + Sharon Schlott	Self			m			✓
Duane D. Dabig	Self			✓			✓
CLIFTON IVY							✓
TIM FOURPOINT	Self						✓
Alex Beers	Self			✓			✓
TOM GOLL	Resident						✓
BOB KEINSCHNITZ	RESIDENT						✓
Eric Kari							
Teena Zaebawy	Resident			✓			✓
Sarah Menniman							✓
Hesley White							✓
Ramona Kuhns	Resident						✓

PUBLIC HEARING SIGN-IN SHEET
 Soldiers Home Road and Sagamore Parkway Access Ramp
 West Lafayette, Tippecanoe County, Indiana
 Lead Des. No. 1401291 and 2201253
 Tuesday, August 12, 2025

Please Note: Your name and e-mail address will be redacted prior to attaching this sign-in sheet to the Environmental Document. Please place a check mark in the appropriate column at right if you wish to receive project updates by Mail or E-mail.

NAME (PLEASE PRINT)	ORGANIZATION (if Applicable)	ADDRESS	E-MAIL ADDRESS	Non-Public Officials Check to speak	Public Officials Check to Speak	Prefer U.S. Mail	Prefer E-mail
Aaron Smith	N/A			✓			✓
Steve Becken							✓
JANISAN BARNW				✓		✓	
MASON ANDERSON				✓			✓
NANCY MALADY							
Joseph & Janet Bolan				✓			
Joseph Bolan							
CYNTHIA HARTMAN							
JOSEPH TI KRAUSE							
Mary McKay	MSG2						✓
LUDA FEISTER	N/A						✓
Toni Lessee	N/A			✓			✓
Heather Refar S	N/A						✓
Destiny Calladay							✓
Della Willmann	N/A						
Sandra Kelly							✓
Linda Young							✓
TONY HEISTERT-MAJ							✓
Natalie Guthrie							✓
David McKinnis				✓			✓

PUBLIC HEARING SIGN-IN SHEET
 Soldiers Home Road and Sagamore Parkway Access Ramp
 West Lafayette, Tippecanoe County, Indiana
 Lead Des. No. 1401291 and 2201253
 Tuesday, August 12, 2025

Please Note: Your name and e-mail address will be redacted prior to attaching this sign-in sheet to the Environmental Document. Please place a check mark in the appropriate column at right if you wish to receive project updates by Mail or E-mail.

NAME (PLEASE PRINT)	ORGANIZATION (if Applicable)	ADDRESS	E-MAIL ADDRESS	Non-Public Officials Check to speak	Public Officials Check to Speak	Prefer U.S. Mail	Prefer E-mail
Cathy Cathy McKinnis	self			✓ com			✓
Myrion Krieger	self						✓
Jay Brankaman	self						✓
Loel Linda Klotz	self						✓
Randy & Lorraine Moyer	self						✓
Lynn A. Rahn	self						✓
Richard Kippborn	MSGL						✓
Diana Reif	self						✓
Shelly Lange	self						✓
Graham Cooks	-						✓
Magan Lee	self						✓
Heidi Lange	self neighborhood supported						✓
Jolena Nielsen	self						✓
Darius SNEU	self						✓
Charles Gick	self						✓
Sarah Ruh	self			✓			✓
Jill Hill	self						✓
Andrew Care	self			✓			✓
Gary Burniske	self						✓
Linda Peyton	self						✓

Soldiers Home Road (Phase 1)

Roadway Reconstruction
West Lafayette, Tippecanoe County

Indiana Department of Transportation

Tuesday, August 12, 2025

6:00 p.m.

Margerum City Hall Council Chambers



Welcome

- Purpose/explanation of public hearing
- Public hearing format
- Visit our sign-in table
- Informational handouts
- Participate during public comment session
- Submit written public comments
- Project display area



Soldiers Home Road (Phase 1)

- Introduction of Project Team
 - VS Engineering
 - Project management & engineering design
 - INDOT Crawfordsville District
 - Project oversight
 - Metric Environmental
 - Environmental services
- Recognition of elected and local public officials
- Attendees signing in at the attendance table will be added to project mailing list unless otherwise requested on the sign-in sheet.
- A public hearing notice was mailed to known property owners in the project area and attendees of previous meetings.
- An announcement of this hearing was posted to the City's website, wlmoves.com.
- A copy of the presentation and project documentation will be available online via the City's website.
- Legal notice publishing:
 - Lafayette Journal and Courier:
 - July 25, 2025 and August 1, 2025



Submit Public Comments

- **Submit public comments using the options described in the first page of the information packet:**
 - Public Comment Form
 - Via e-mail (MPeterson@vsengineering.com)
 - Participating during the public comment session via microphone
 - Note that verbal comments will be recorded and transcribed for inclusion into the public hearing transcript.
- **VS respectfully requests comments to be submitted (postmarked) by Tuesday, August 26, 2025.**
- All comments submitted will become part of the public record, and they will be entered into a transcript, reviewed, evaluated, and given full consideration during the decision-making process.



Project Resource Locations

5

- Visit the project web page:

<https://wlmoves.com/projects/project-updates/soldiers-home-road-updates/>



Project Stakeholders

6

- Indiana Department of Transportation
- Indiana Division Federal Highway Administration
- Tippecanoe County
- City of West Lafayette
- Elected and local officials
- Residents and citizens
- Commuters
- Businesses
- Emergency services
- Schools
- Churches
- Community organizations



FAQs

7

Q1: A concern was expressed about the proposed speed limits, noting that current speeds are high.

A: The proposed posted speed will not be increased from the existing 30 mph posting.

Q2: Can centerline pavement markings along the trail be included in the project?

A: Centerline pavement markings are not considered appropriate due to the type and frequency of use for this trail.

Q3: Concerns were expressed about being able to see oncoming trail users when residents exit their driveways.

A: Sight distances for bicyclists have been evaluated. The design will seek to ensure that adequate sight distance is available to motorists and pedestrians in the vicinity of driveways. Sight obstructions due to shrubs and other landscaping will be considered on a case-by-case basis with an emphasis on safety.

Q4: It was noted that broken water lines are a significant concern as these have been a regular occurrence.

A: This concern is acknowledged. The project is expected to include a significant extent of new, relocated water facilities.



FAQs (cont.)

8

Q5: Can a roundabout be installed at Kalberer Road?

A: A roundabout is currently being evaluated at this intersection as part of the design of Phase 2 of the project.

Q6: Residents adjacent to the semi-circular pavement area on the east side of Soldiers Home Road at Kalberer Road noted concerns about the current geometry; they would like to have the excess pavement removed.

A: This concern is noted. The configuration at this intersection is being evaluated under Phase 2 of the project; a roundabout is being evaluated.

Q7: Concerns were expressed about the storm sewer outlets and potential erosion in the ravines.

A: Concerns about potential erosion at the outfalls to the ravines are being addressed in detail as part of the design.



FAQs (cont.)

9

Q8: Why isn't a 2-lane section with revised intersection control being proposed?

A: The addition of a center two-way left turn lane enhances traffic flow and is considered desirable due to the frequent driveways and streets along the project. It allows left-turning vehicles to clear the travel lanes, reducing braking and acceleration, and reducing accident potential. The width of this lane is limited to 12 ft.

Based on traffic counts and growth projections, the level of service at the Cumberland Avenue intersection is adequate for future conditions. For this reason, no change to the configuration of the intersection is considered warranted. Traffic signals are not currently warranted for this intersection following an evaluation of traffic and pedestrian volumes. If future evaluation shows that signalization is warranted, appropriate actions will be taken at that time.

A roundabout is proposed for the intersection with the Sagamore Parkway Ramps due to the substandard current and projected levels of service here. A roundabout is being evaluated for the Kalberer Road intersection.

Q9: Questions were raised regarding the appropriate number of pedestrian crossings needed along the project for crossing Soldiers Home Road.

A: Crossings are currently proposed at three intersections: The Sagamore Parkway Ramps (north side of roundabout), Hamilton Street (north side), and, for Phase 2, at Kalberer Road (north side). The City believes that these are sufficient to facilitate pedestrian crossing movements.



FAQs (cont.)

10

Q10: Can more research be done to determine the best and safest way to provide for interaction between bicycles, pedestrians, and motorists? The Indianapolis Cultural Trail - Cycle Track has all three separated. Kalberer Road has both bike lanes in the roadway and a trail. An attendee requested that a 12 ft wide trail (5 ft for pedestrians, 7 ft for bicyclists) be provided, with striping for bicyclists and pedestrians.

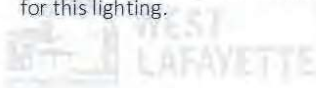
A: The proposed design is believed to represent the most appropriate solution for this roadway. It allows for both bicyclist and pedestrian use of the trail, while also providing a separate sidewalk for pedestrians on the opposite side of the trail. Both the trail and sidewalk are to extend along the entire route. This arrangement is consistent with recently constructed facilities throughout similar neighborhoods in the city. Rectangular Rapid Flashing Beacons and appropriate signs and pavement markings will be considered for use at pedestrian crossings. Sight distances will be maximized.

Q11: Whose responsibility is snow removal on the trail?

A: Snow removal for trails is performed by the City's Parks Department.

Q12: Where will the new lighting be located and who pays for the electricity?

A: Roadway lighting is to be placed at intersections only. Trail lighting is to be continuous, mounted on bollards. The City will pay for this lighting.



FAQs (cont.)

11

Q13: Concerns were expressed about backing out of the driveway due to the center two-way left turn lane.

A: The center two-way left turn lane, while requiring additional distance to cross, is believed to provide a suitable refuge area for vehicles seeking to enter traffic.

Q14: Will the alignment follow the existing blind curve (at Westview Circle)? Mailboxes and fences are being damaged in accidents.

A: The proposed roadway alignment matches the existing alignment. The sight distance along curve has been checked and confirmed that it meets requirements for the project's design speed of 30 mph.

Q15: Will this project limit truck traffic?

A: The roadway is not a designated truck route. The use of the roadway by through truck traffic is an enforcement concern. The City will install "No Trucks" signs along Soldiers Home Road.



FAQs (cont.)

12

Q16: It was requested that bus stops and pull-offs be incorporated.

A: The selection of the locations and associated amenities are being coordinated with CityBus. The center two-way left turn lane allows space for motorists to pass stopped city buses.

Q17: Regarding residents of Overlook Drive, will they be impacted in Phase 2 again, after being impacted in Phase 1?

A: Construction of Phase 1 extends northward a short distance beyond Hamilton Street and Overlook Drive; no work on this intersection is anticipated for Phase 2. Overlook Drive residents will be impacted by roadway restrictions north of this intersection due to the Phase 2 work.

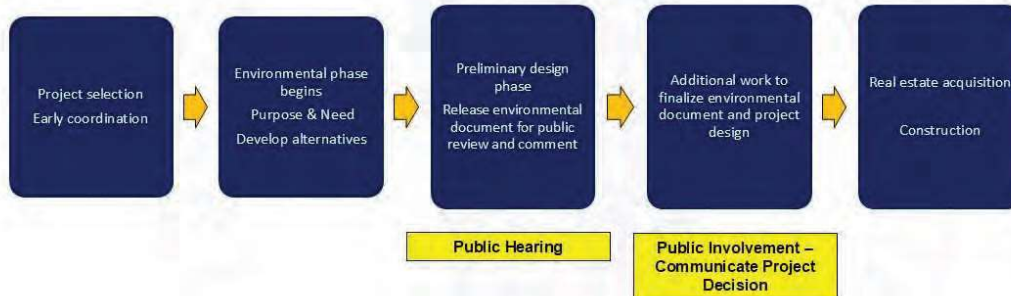
Q18: Can new mailboxes have double-sided doors for easy access? Will mailboxes that are currently situated along the edge of the road still be situated this way?

A: Yes, to both of these questions.



Project Development

13



Environmental Document

14

National Environmental Policy Act (NEPA)

- Requires INDOT to analyze and evaluate the impacts of a proposed project to the natural and socio-economic environments
- NEPA is a decision-making process
 - Purpose and Need
 - Alternatives Screening
 - Preferred Alternative
- **Impacts are analyzed, evaluated, and described in an environmental document**
 - What are the impacts this project might have on the community?
 - How can impacts be avoided?
 - Can impacts be minimized?
 - Mitigation for impacts?
- **Environmental document released for public involvement**
 - Categorical Exclusion – Level 2 (CE-2)
 - Public Involvement on July 3rd, 2025
 - Available for review via public repositories



Environmental Document

• Environmental Process

- Establish purpose and need
- Develop possible alternatives
 - The “Do Nothing” alternative is a baseline for comparison
- Evaluate and screen alternatives
- Identify a preferred alternative
- Solicit public comment on environmental document and preliminary design plan
- Address and consider public comment as part of decision-making process
- Finalize and approve environmental document



Examples of Items Evaluated

Right-of-way
Streams, wetlands, and other waters
Floodplains
Endangered species
Farmland
Cultural resources (historic/archaeological)
Parks and recreational lands (trails)
Air quality
Noise
Community impacts
Hazardous materials
Permits
Mitigation
Public involvement
Commercial development



Existing Condition



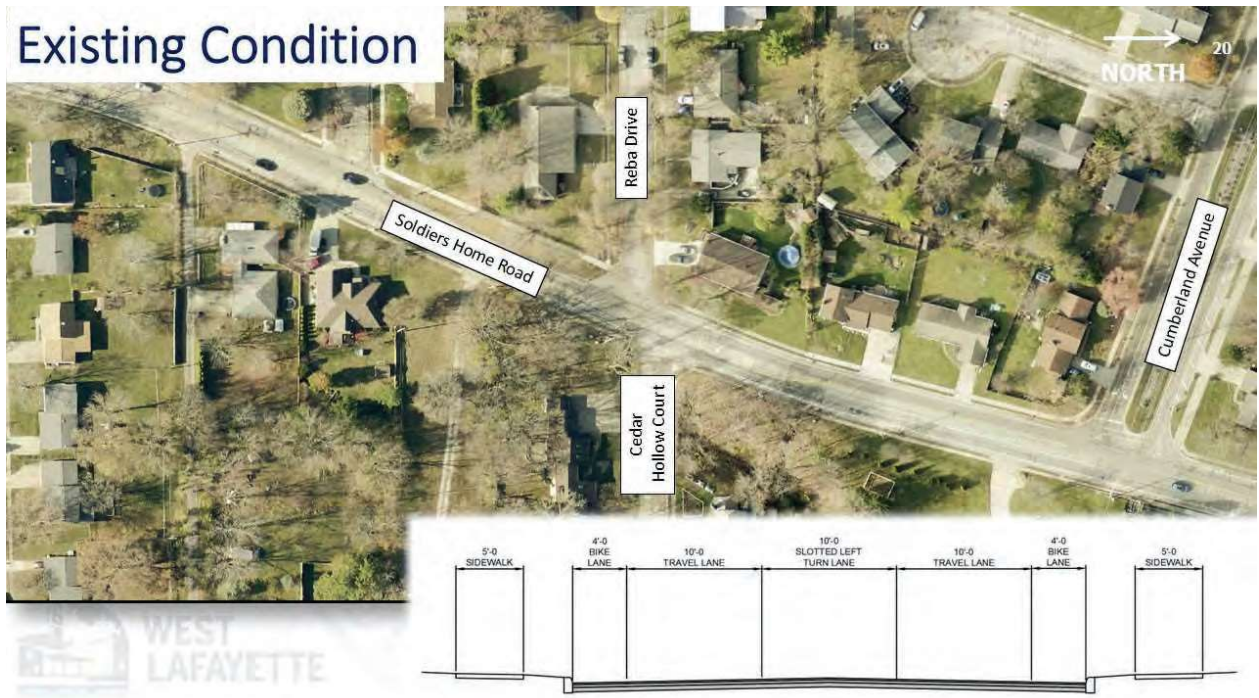
Existing Condition



Existing Condition



Existing Condition



Existing Condition



Soldiers Home Road (Phase 1) – Project Purpose and Need

22

Need

- Level of Service (LOS)
 - LOS at the Sagamore Parkway Access Ramp and Soldiers Home Road intersection is (D) during AM peak hour and (E) during PM peak hour.
- Crash Data
 - Crash data (based on 2019 to 2021 traffic records):
 - 28 total accidents within project limits
 - 20 (71%) accidents occurred north of the Sagamore Parkway access ramp.
 - 8 (29%) accidents occurred at the Sagamore Parkway access ramp.

Purpose

- Increase operational safety of the roadway by reducing the frequency and severity of accidents.
 - Improve operational efficiency of the roadway.
 - Improve roadway accessibility and connectivity.
 - Improve drainage
- WEST LAFAYETTE

Other Alternatives Considered

- **Do Nothing**

- Does not meet purpose and need, does not enhance safety of the roadway or at the intersection, and operational efficiency is likely to decline with traffic growth.

- **Roadway Reconstruction**

- Improvement of the existing roadway, in-kind only. No additional right-of-way required.
- Does not improve the safety and operational efficiency of the roadway.
- Does not meet purpose and need.

- **Roadway Reconstruction with Two-Way Left Turn Lane and Roundabout**

- Improvement of the existing roadway and drainage structures. Additional right-of-way required.
- Improves safety and operational efficiency of the roadway.
- Meets purpose and need.

Preferred Alternative

- **Roadway Reconstruction Two-Way Left Turn Lane and Roundabout**

- Meets purpose and need of project
- Enhances safety by:
 - Illuminating roadway corridor
 - Reducing the number of potential vehicle conflict points
 - Reducing the severity of traffic accidents
 - Providing proper drainage, eliminating ponding on the roadway
- Optimized lane configuration enhances operational efficiency at the Sagamore Parkway intersection

Existing Intersection Level of Service: AM LOS: D / PM LOS: E
--

Proposed Roundabout: Level of Service AM LOS: A / PM LOS: A
--

Proposed Roadway Layout



Proposed Typical Section

